

*Jaguar*

SALOON AND COUPÉ MODELS



# S P E C I F I C A T I O N S

**ENGINE (3½ Litre).** Six cylinder overhead valve Jaguar engine, 82 mm. bore × 110 mm. stroke; 3,485 c.c.; power developed 125 brake h.p.; counterbalanced crankshaft carried in seven bearings; aluminium pistons; chrome iron cylinder block; light alloy connecting rods; machined combustion chamber and ports; detachable head; cooling by pump circulation with by-pass thermostatic control; submerged oil pump; forced lubrication throughout; complete circulation oil filter; special Lucas coil and distributor ignition; twin S.U. carburettors with electrically controlled starting carburetter; dual exhaust system.

**ENGINE (2½ Litre).** Six cylinder overhead valve Jaguar engine, 73 mm. bore × 106 mm. stroke; 2,663 c.c.; power developed 102 brake h.p.; counterbalanced crankshaft carried in seven bearings; aluminium pistons; chrome iron cylinder block; light alloy connecting rods; machined combustion chamber and ports; detachable head; cooling by pump circulation with by-pass thermostatic control; submerged oil pump; forced lubrication throughout; complete circulation oil filter; special Lucas coil and distributor ignition; twin S.U. carburettors with electrically controlled starting carburetter; dual exhaust system.

**ENGINE (1½ Litre).** Four cylinder overhead valve Jaguar engine, 73 mm. bore × 106 mm. stroke; 1,775.8 c.c. overhead valves; three-bearing counterweighted crankshaft; aluminium pistons; chrome iron cylinder block; steel alloy connecting rods; machined combustion chamber; cooling by pump circulation with by-pass thermostat control; forced lubrication throughout by submerged oil pump; Tecalemit oil filter; coil ignition; S.U. horizontal carburetter with water heated induction manifold.

**FRAME.** Underslung frame of immense strength. Box section throughout with 6" deep side members.

**TRANSMISSION.** Four-speed gearbox with synchromesh on second, third and top. Hardy Spicer all-metal propeller shaft in needle roller bearings. Single plate 10" diameter clutch.

**GEAR RATIOS (3½ Litre model).** First 14-40; Second 8-25; Third 5-73; Top 4-27.

**GEAR RATIOS (2½ Litre model).** First 15-35; Second 8-80; Third 6-12; Top 4-55.

**GEAR RATIOS (1½ Litre model).** First 19-23; Second 11-84; Third 7-08; Top 4-75.

**SUSPENSION.** Long, flat low-periodicity road springs with lead coated leaves. Hydraulic dampers.

**BRAKES.** Immensely powerful 14" Girling brakes incorporating two leading shoe principle. Deeply ribbed Millenite balanced brake drums. The hand brake operates on all four wheels.

**FUEL SUPPLY.** Fuel is fed by two electric pumps from 14 gallon rear tank with reserve tap.

**ELECTRICAL EQUIPMENT.** Lucas de Luxe throughout. Twelve volt set with ventilated dynamo. Powerful head lamps with finger flick double filament control. Two fog or pass lamps. Faired-in parking lamps. Stop warning light at rear. Reverse light with automatic engagement. Two blended note horns. Twin bladed screen wipers independently operated. Cigar lighter. Traffic indicators.

**INSTRUMENTS.** 5" diameter 120 m.p.h. speedometer with trip recorder. 5" diameter engine revolution counter. Ammeter. Oil pressure gauge. Water temperature gauge. Petrol gauge. Traffic indicator warning light. Ignition warning light. Air conditioning warning light. Electric clock.

**BODY.** Full five-seater all steel body finished in a range of colour schemes embodying pleasing two-tone colour schemes.

**UPHOLSTERY AND CARPETING.** Upholstered throughout in finest quality soft tanned Vaumol hide. Floor thickly carpeted over felt underlay.

**SEATING.** All seats luxuriously upholstered in Vaumol hide. Both front seats fully adjustable for height and reach. Heavily padded folding centre armrest in rear compartment, also side armrests of club chair type.

**INTERIOR HEATER.** Interior heating is by Clayton air-conditioning unit incorporating de-froster and de-mister.

**SPARE WHEEL AND TOOLS.** All tools are located individually in specially shaped recesses in sound-proof container in rear locker lid. Tool compartment is illuminated automatically when lid is opened. Spare wheel is housed in special compartment beneath luggage locker.

**LUGGAGE ACCOMMODATION.** Ample accommodation for luggage is provided in the large rear locker which is fitted with rubber protector strips. The locker lid is constructed to carry additional luggage when in the lowered position.

**EASY JACKING.** Any wheel may be raised clear of the ground with the minimum of effort in 15 seconds by means of special easy-lift jack operating in conveniently located jack slots.

**STEERING.** Burman Douglas worm and nut steering, light, positive and accurate at all speeds. Bluemel adjustable steering wheel is mounted on telescopic column affording immediate adjustment for reach.

**TOOLS.** Locker key, hydraulic oil gun, copper and rawhide hammer, starting handle, tyre valve extractor, lifting jack, jack handle, adjustable spanner, oil can, pliers, tyre pump, three open-ended spanners, two tyre levers, distributor screwdriver, feeler gauge, five box spanners, two tommy bars, screwdriver, rear axle spanner, nozzle.

**TOURING EQUIPMENT.** Set of decarbonising joints, one push rod, two push rod return springs, two valve springs, one fan belt, one top water hose, one bottom water hose, one water bypass hose, one flexible oil pipe, four side lamp bulbs, one headlamp bulb, one pair distributor points, one distributor condenser, two spark plugs, one flexible oil pipe.

## PERFORMANCE DATA

**3½ LITRE MODEL.** Acceleration through the gears: zero to 50 m.p.h. in 9.8 seconds; zero to 60 m.p.h. in 14.2 seconds; zero to 70 m.p.h. in 20.8 seconds. Approximate maximum speeds in the various gears: top gear 95 m.p.h.; third gear 80 m.p.h.; second gear 50 m.p.h.; first gear 30 m.p.h.

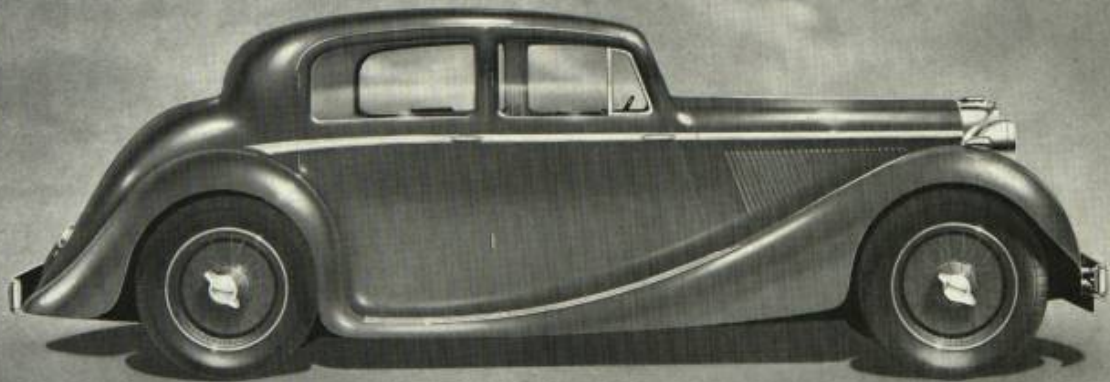
**2½ LITRE MODEL.** Acceleration through the gears: zero to 50 m.p.h. in 11.3 seconds; zero to 60 m.p.h. in 16.5 seconds; zero to 70 m.p.h. in 25.8 seconds. Approximate maximum speeds in the various gears: top gear 90 m.p.h.; third gear 68 m.p.h.; second gear 48 m.p.h.; first gear 25 m.p.h.

**1½ LITRE MODEL.** Acceleration through the gears: zero to 50 m.p.h. in 16 seconds; zero to 60 m.p.h. in 25 seconds. Approximate maximum speeds in the various gears: top gear 75 m.p.h.; third gear 56 m.p.h.; second gear 35 m.p.h.; first gear 21 m.p.h.

## PRINCIPAL DIMENSIONS

The principal dimensions for both the 2½ and 3½ Litre models are: Overall length 15' 6"; Overall width 5' 6"; Overall height 5' 1"; Wheelbase 10' 0"; Track 4' 8"; Turning circle 38' 0". 1½ Litre model: Overall length 15' 1"; Overall width 5' 5½"; overall height 5' 0".

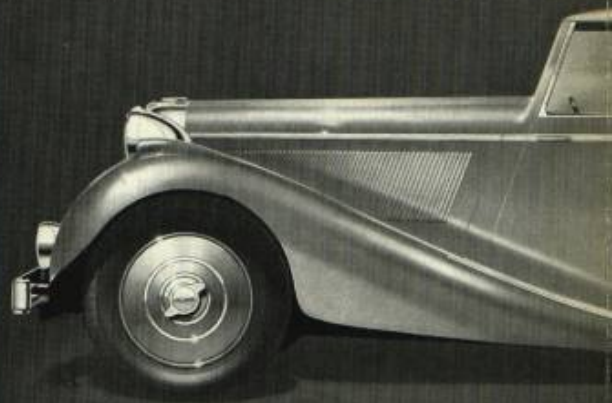
*England's most beautiful*



**S**LEEK and smart, the distinctive lines of the Jaguar saloon make an immediate appeal to the connoisseur of fine motor cars, whilst a few moments at the wheel are sufficient to convince the most experienced motorist that here is a car with a performance to give delight to the most fastidious.

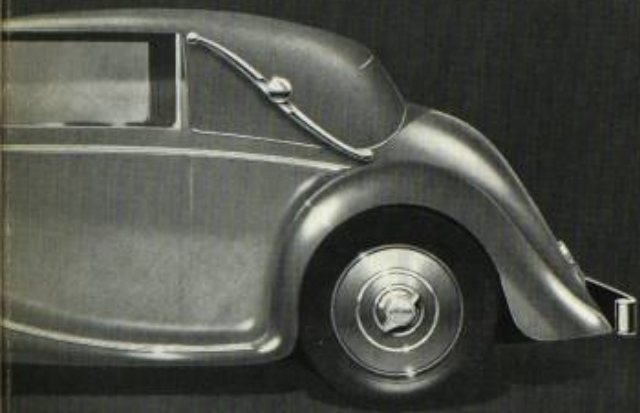
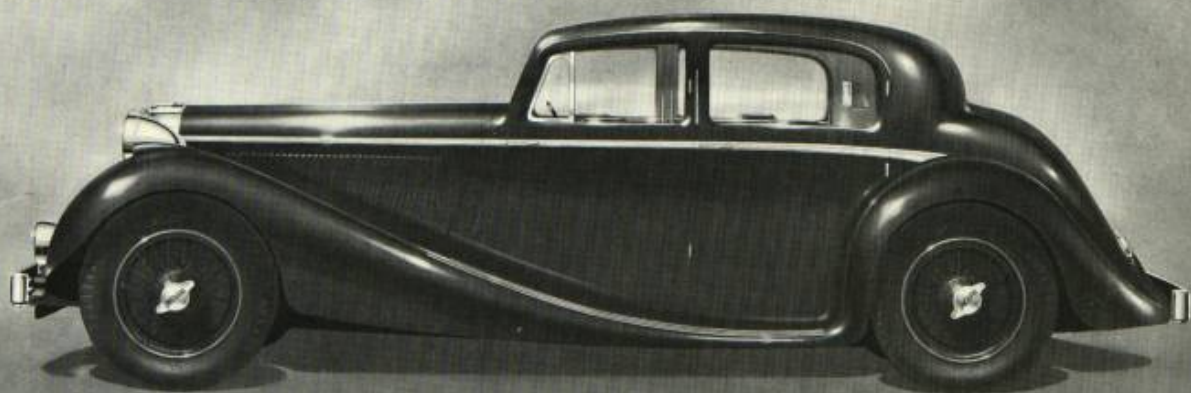
Built in an exacting tradition which calls for racing car characteristics combined with the ease and comfort of a smart town carriage, the Jaguar has for long enjoyed unrivalled leadership in the high performance field. Capable of speeds in excess of 95 m.p.h., the Jaguar is unique in the complete control afforded throughout its speed range. With its low centre of gravity and scientific disposal of weight, there is an entire absence of sway or roll. The tenacity with which the Jaguar holds the road at the highest speeds is amongst its most outstanding characteristics. Light yet positive steering enables the car to be placed to a hair's breadth, whilst the immensely powerful braking system is instantly responsive to every need.

The Jaguar can be driven far, fast and hard with entire absence of driving fatigue—thanks to the finely balanced blend of comfort and controllability inherent in its design.



**T H E F I N E S T C A R O F I T S**

high performance car



ON those occasions which call for the snug protection of a fully enclosed car, the Jaguar drop-head coupé with its air-conditioned interior meets every requirement.

In the fully opened position, the clean sleek lines of an open tourer are revealed and the Jaguar becomes the car for the country club, the camp, the fishing expedition and other open air activities of an informal nature. Between these extremes, is the semi-folded or coupé de ville position in which practical considerations and elegance are happily combined.

As befits a car which appeals to discriminating owners, the furnishings and appointments of the Jaguar are of the highest quality and are in quiet good taste. All upholstery is in fine quality soft tanned furniture hide harmonising with the pile carpeting laid upon thick felt underlays. In no other car has so much attention been devoted to driver and passenger comfort. Both front seats are individually adjustable, whilst the occupants are seated, for height as well as reach. Thus the driver can ensure the most comfortable driving position without interfering with passenger comfort. Driver comfort is further enhanced by the provision of an adjustable steering wheel.

In engineering perfection, beauty of design and high quality workmanship and finish, the Jaguar truly merits its title, "The finest car of its class in the world."

C L A S S I N T H E W O R L D