



*Sheer beauty of line*

**RICHARD G. TAYLOR**  
*Sole Concessionaire*

FOR



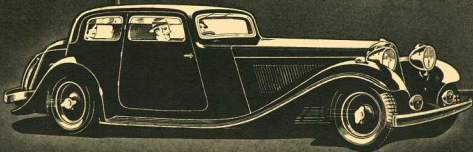
CARS

FOR U.S.A.

WALDORF ASTORIA PARK AVENUE N.Y.

... and unparalleled performance too—for the 1935 S.S. with high compression engine incorporating special induction system with two carburetors, provides exceptional acceleration with high cruising and maximum speeds. The S.S. for 1935 is a car designed to satisfy the demands of the most exacting sports car connoisseur. Below is the famous S.S. I Saloon.

Price: 20 h.p. \$2,350



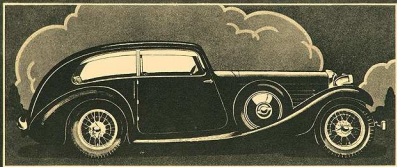
S. S. CARS LTD. FOLESHILL COVENTRY



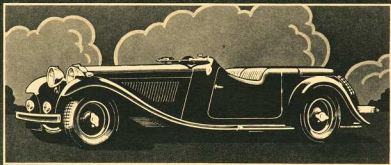
## for an even greater thrill

The Airline Saloon, a brilliant newcomer to the **33** Range, is designed with all the consummate style, grace and dignity that is synonymous with the name **33**. With its flashing speed and acceleration, and unique roadholding—here is a car to give you a new thrill! Powered by high compression engine with twin carburetors. While strikingly streamlined, a notable feature is the luxurious comfort provided for four adults and really spacious luggage accommodation. Coachbuilt body, exceptionally large windows, finest quality Vaumol hide upholstery.

Price: 20 h.p. \$2,500



*Airline Saloon*



## *SS1 open 4 seater*

**sweeping lines — surging power**

1934 proved beyond all doubt that for beauty, performance and sheer individuality the **SS1** Open Sports 4-seater is in a class by itself. To drive the 1935 model is to experience a new ideal of performance—in the smooth responsiveness of a powerful high compression engine, with sparkling acceleration gained by special induction system incorporating two high speed carburetors. Superb roudholding qualities enable long distances to be covered without the slightest sense of fatigue either for driver or passengers.

Price: 20 h.p. \$2,250

**SS1** 4-seater Saloon (Illustrated on nrst page) Possessing the same qualities as the **SS1** open 4-seater, the saloon represents the ultimate in smartness, grace, comfort and performance. It is luxuriously upholstered and lavishly appointed throughout and accommodates four adults with ease.

Price: 20 h.p. \$2,350



PRICES QUOTED ARE DELIVERED NEW YORK

# SPECIFICATION

## SSI Airline, Saloon and Open 4-seater models

**ENGINE.** 20 h.p. 73 m.m. bore  $\times$  106 m.m. stroke; 2663.7 c.c. 7-bearing crankshaft, 2½ in. dia. main bearings, 1½ in. dia. big ends. Aluminium pistons. Chromium iron cyl. blocks. Light alloy connecting rods. High efficiency induction and exhaust manifold. Detachable high compression aluminium cyl. head. Two special high speed carburettors. Cooling by centrifugal pump and fan with adjustable thermostat. High pressure submerged oil pump. Coil ignition. Single dry plate light action clutch.

**TRANSMISSION.** Synchro-mesh gears on second, third and top. Hardy Spicer all-metal propeller shaft and universal joints. Spiral bevel final drive. Easy to hand change speed lever.

**SUSPENSION.** Ensuring smooth and steady roadholding with maximum comfort at all speeds. Long flat road springs of low periodicity, mounted on "Silentbloc" bushes. Hartford friction type shock absorbers front and rear. Rear springs 42½ in.  $\times$  1½ in. Front springs 34½ in.  $\times$  1½ in.

**BRAKES.** Highly efficient Bendix Duo-Servo. Large diameter Millenite cast brake drums, deeply ribbed, 12½ in. external dia. Hand and foot-operated on all four wheels.

**STEERING.** Marles Weller cam and lever type.

**PETROL SUPPLY** by A.C. pump with auxiliary priming lever for hand operation, from 12 gallon tank at rear of chassis.

**WHEELS AND TYRES.** Rudge-Whitworth centre-lock splined hub type racing wheels. Dunlop 5.50  $\times$  18 tyres.

**ELECTRICAL EQUIPMENT.** 12-volt set. Large type head lamps. Dip and switch control above steering wheel. Fingertip ignition control. Stop light. Reversing light. Sports type wing lamps. Special Lucas type blended note horns. Lamps and horns all chromium-plated finish.

**COACHWORK.** Coachbuilt, with leather grained head and large travelling trunk. Airline Saloon is coachbuilt—all panelled—and has large concealed luggage locker. Flush-fitting and exceptionally wide doors. Quick-action sliding roof on Airline and Saloon models. Safety glass. Wide vision windscreen, with Lucas duo-blade wiper. Upholstery of finest quality Vasmol hide throughout. Polished figured walnut instrument panel. Complete suite of interior fittings. Thickly carpeted floor. Armchair rear seats and sliding front seats. Deep foot wells. Fully equipped and illuminated instrument panel. Self-cancelling traffic indicators. Bumpers and spare wheel cover (on the Airline Saloon there are two spare wheels with covers). Draught proof all-weather equipment on open 4-seater. Many beautiful colour schemes.

*All SS Cars for 1935 are powered by high compression engine incorporating special induction system with two carburettors.*

## SERVICE STATION

A completely equipped and fully staffed service station is maintained in New York. All spares are stocked and are immediately available.

*Sole Concessionaire for SS Cars for U.S.A.*

**RICHARD G. TAYLOR**  
WALDORF ASTORIA, PARK AVENUE  
NEW YORK

MANUFACTURERS: S.S. CARS LTD., FOLESHILL, COVENTRY  
PHONE: COVENTRY 8891 (TEN LINES) TELEGRAMS: SWALLOW, COVENTRY, ENGLAND



PRINTED IN ENGLAND