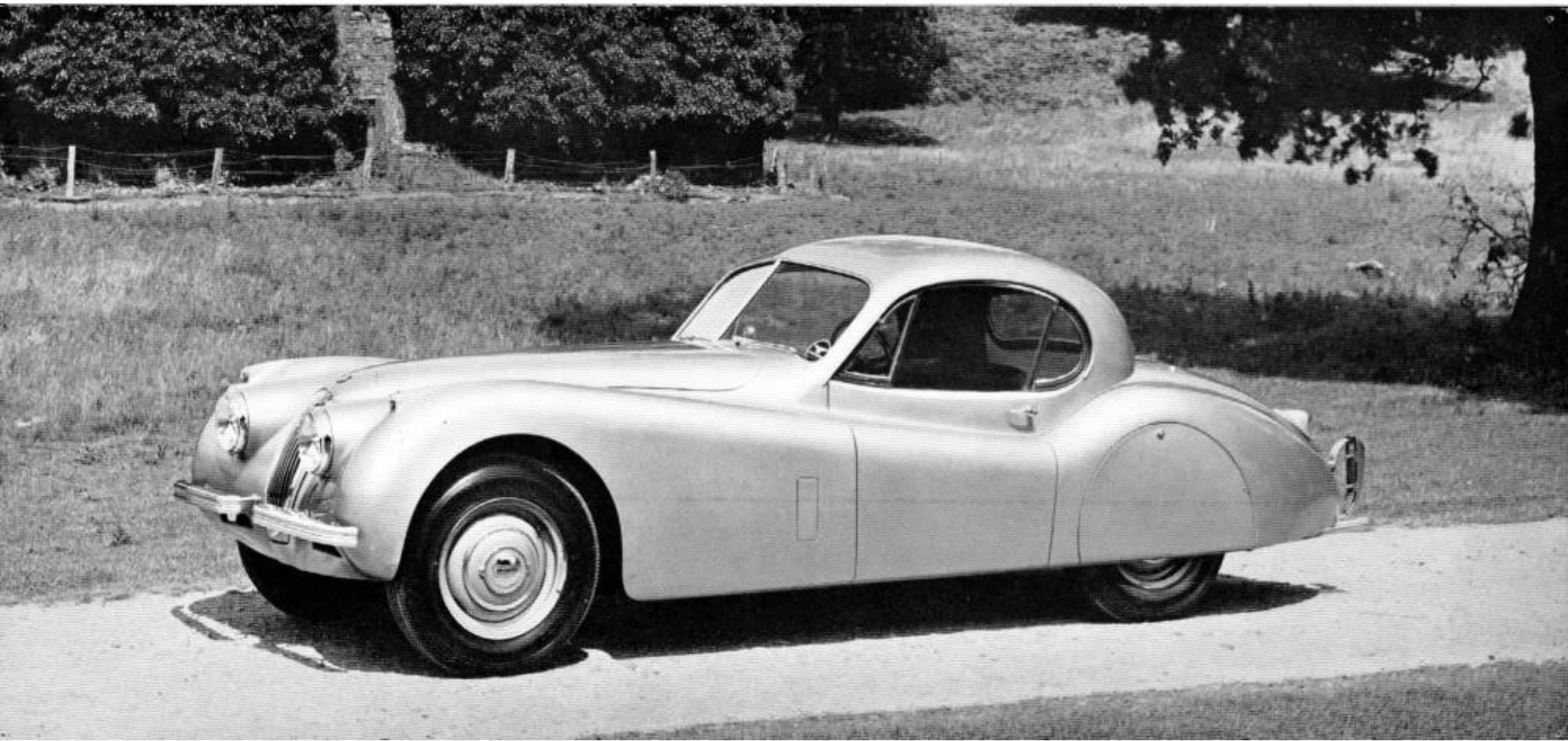




JAGUAR

THE FINEST CAR OF ITS CLASS IN THE WORLD





Polished walnut is used for all wood fittings including the instrument panel which is fitted with a comprehensive range of large, easily read instruments.

Specification 3½ LITRE XK 120 FIXED HEAD COUPE

ENGINE. Six cylinder 3½ litre Jaguar engine; 70° twin overhead camshafts driven by a two-stage duplex roller chain; 83 mm. bore x 106 mm. stroke; 3,442 c.c. developing 160 b.h.p. at 5,200 r.p.m.; large directly operated valves and austenitic cast-iron seats; compression ratio, 8 or 7:1; high grade chrome iron cylinder block, cooling by pump circulation with by-pass thermostat control; cylinder head of high tensile aluminium alloy with hemispherical combustion chambers; aluminium alloy pistons; steel connecting rods; forced lubrication throughout by submerged pump with full flow filter and floating gauze intake; twin S.U. horizontal carburettors with electrically controlled automatic choke; counterweighted crankshaft carried in seven large steel backed precision bearings, 2½ in. diameter.

FRAME. Straight plane steel box section frame of immense strength; torsional rigidity ensured by large box section cross members.

TRANSMISSION. Four-speed single helical synchromesh gearbox, ground teeth gears running on needle bearings; synchromesh on 2nd, 3rd and top. Gear ratios: 1st, 11.95; 2nd, 7.01; 3rd, 4.84; 4th, 3.54; optional axle ratios: 3.31, 3.77, 4.09, 4.27 and 4.55. Hardy Spicer propeller shaft with needle roller bearings; Borg & Beck 10 in. diameter single dry plate clutch; central gear lever with remote control.

SUSPENSION. Independent front suspension incorporating transverse wishbones and long torsion bars with Newton telescopic type hydraulic shock absorbers. Rear suspension by long silico-manganese steel half elliptic springs controlled by Girling PV.7 hydraulic shock absorbers. Rear springs totally enclosed in gaiters fitted with grease nipples.

BRAKES. Lockheed full hydraulic, two-leading-shoe front; 12 in. drums; friction lining area, 207 square ins.; front drums fitted with cooling ducts; central fly-off handbrake operating on the rear wheels only through a separate linkage.

STEERING. Burman re-circulating ball type steering, positive and accurate at all speeds; 17 in. Blumel adjustable wheel. Left or right-hand steering optional.

WHEELS AND TYRES. Pressed steel bolt-on disc wheels with wide base rim and Dunlop 6.00 x 16 in. road speed tyres.

FUEL SUPPLY. By a new large delivery S.U. electric pump from a 15 gallon rear tank with reserve supply and warning light; petrol filler cap concealed and fitted with lock and key.

ELECTRICAL EQUIPMENT. Lucas de luxe throughout. 12 volt, 64 amp. capacity, twin batteries with constant voltage controlled ventilated dynamo, 10 hour discharge, flush fitting head lamps and wing lamps, stop light, reverse light, twin rear lights, panel light, interior light, twin blended-note horns, twin-blade screen wiper, cigar lighter, starter motor, vacuum and centrifugal automatic ignition advance.

INSTRUMENTS. 5 in. diameter 110 m.p.h. speedometer, 5 in. diameter revolution counter, ammeter, oil pressure gauge, water thermometer gauge, petrol gauge with warning light, electric clock.

CAR HEATER. Built-in car interior heater incorporating de-froster and de-mister.

BODY. Two-seater fixed head coupe; seating upholstered in finest quality leather on Dandopillo; safety glass all round; four ventilating windows; adjustable air vents; windscreens washer fitted as standard equipment.

SEATING. Divided seat and squab, independently adjustable for reach.

INTERIOR APPOINTMENTS. Instrument panel and garnish rails finished in finest quality figured walnut; cubby hole, glove drawer and ashtray.

SPARE WHEEL AND TOOLS. The spare wheel is carried beneath the boot floor in a separate compartment and is readily accessible. The tools and jack are carried in a special container fitted to the side of the luggage compartment, and the wheel brace is housed in the spare wheel compartment.

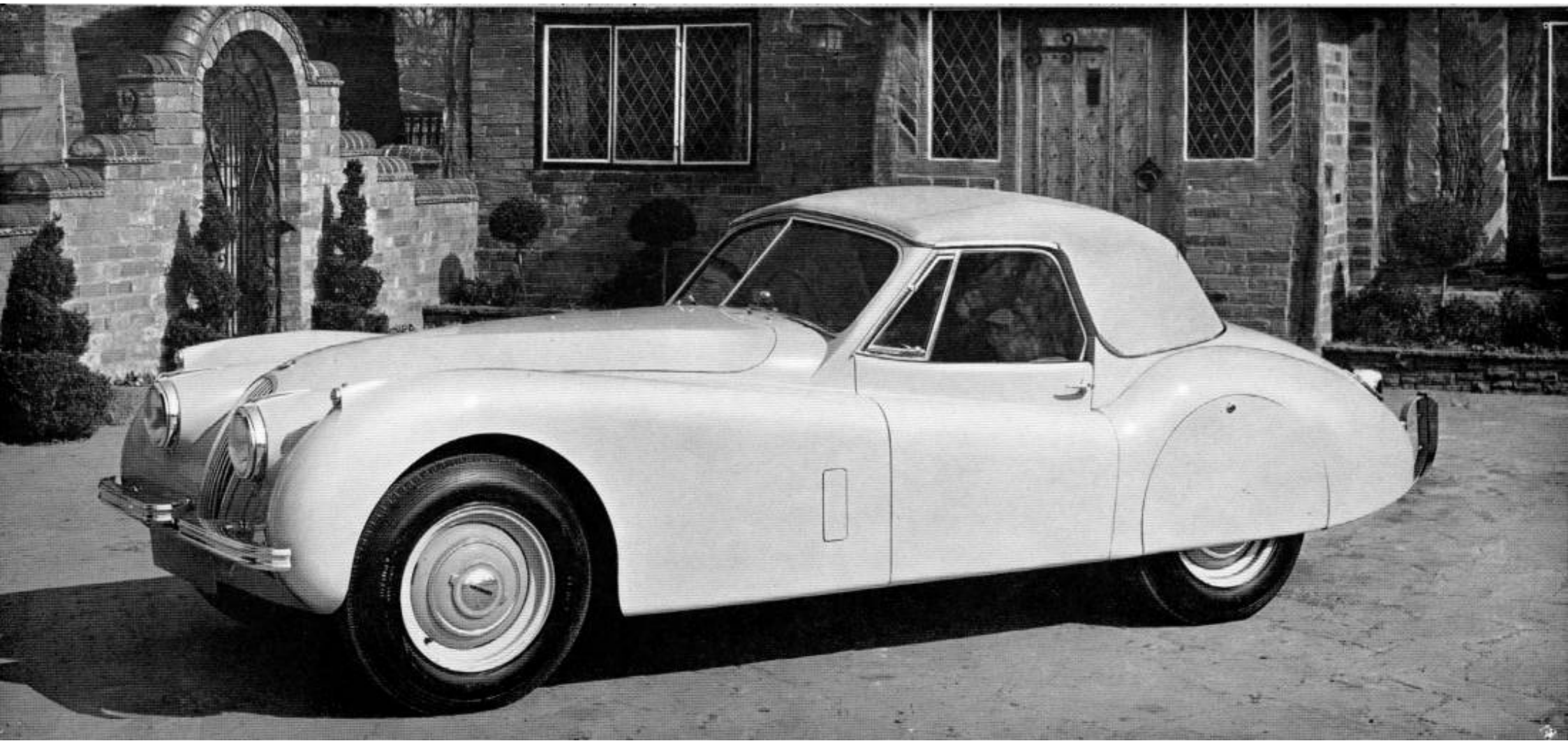
LUGGAGE ACCOMMODATION. Ample accommodation is provided in a capacious rear locker, provided with an automatic light. There is also provision for parcels behind seats.

EASY JACKING. A central jack on each side of the car raises both wheels simultaneously with the minimum of effort by means of a special easy-lift jack.

PRINCIPAL DIMENSIONS. Wheel base, 8 ft. 6 ins.; track front, 4 ft. 3½ ins.; track rear, 4 ft. 2½ ins.; overall length (over bumpers), 14 ft. 5 ins. approximately; overall width, 5 ft. 2 ins.; overall height, 4 ft. 5½ ins.; ground clearance, 7½ ins.; unladen turning circle, 31 ft. 0 ins.; dry weight, 25½ cwt.

ALTERNATIVE EQUIPMENT. For sporting events an alternative 24 gallon fuel tank and two spare wheels can be supplied. This is not generally recommended owing to the considerable reduction in luggage accommodation.

SPECIAL EQUIPMENT MODEL. In addition to the above specification a Special Equipment Model is available incorporating high lift camshafts and wire wheels.





The fully padded and lined hood is easily folded, and when in this position is covered by a neat tonneau which is instantly removable.

Specification 3 $\frac{1}{2}$ LITRE XK 120 DROP HEAD COUPE

ENGINE. Six cylinder 3 $\frac{1}{2}$ litre Jaguar engine; 70° twin overhead camshafts driven by a two-stage duplex roller chain; 83 mm. bore x 106 mm. stroke; 3,442 c.c. developing 160 h.p. at 5,200 r.p.m.; large directly operated valves and austenitic cast-iron seats; compression ratio, 8 or 7:1; high grade chrome iron cylinder block, cooling by pump circulation with by-pass thermostat control; cylinder head of high tensile aluminium alloy with hemispherical combustion chambers; aluminium alloy pistons; steel connecting rods; forced lubrication throughout by submerged pump with full flow filter and floating gauze intake; twin S.U. horizontal carburettors with electrically controlled automatic choke; 2 $\frac{1}{4}$ in. diameter counterweighted crankshaft carried in seven large steel backed precision bearings.

FRAME. Straight plane steel box section frame of immense strength; torsional rigidity ensured by large box section cross members.

TRANSMISSION. Four-speed single helical synchromesh gearbox, ground teeth gears running on needle bearings; synchromesh on 2nd, 3rd and top. Gear ratios: 1st and reverse, 11.95; 2nd, 7.01; 3rd, 4.84; top, 3.54; optional axle ratios, 3.31, 3.77, 4.09, 4.27 and 4.55.

SUSPENSION. Independent front suspension incorporating transverse wish-bones and long torsion bars with Newton telescopic type hydraulic shock absorbers. Rear suspension by long silico-manganese steel half elliptic springs controlled by Girling PV.7 hydraulic shock absorbers.

BRAKES. Lockheed full hydraulic two-leading-shoe front and 12 in. drums; friction lining area, 297 square ins.; front drums fitted with cooling ducts; central fly-off handbrake operating on the rear wheels only.

STEERING. Bursman re-circulating ball type steering; 17 in. Blumel adjustable wheel. Left or right-hand steering optional.

WHEELS AND TYRES. Pressed steel bolt-on disc wheels with Dunlop 6.00 x 16 in. road speed tyres.

FUEL SUPPLY. By large delivery S.U. electric pump from a 15 gallon rear tank with petrol level warning light.

ELECTRICAL EQUIPMENT. Lucas de luxe throughout, 12 volt, 64 amp. capacity, twin batteries with constant voltage controlled ventilated dynamo, 10 hour discharge, flush fitting head lamps and wing lamps, stop light, reverse light, twin rear lights, panel light, fitted interior light, twin blended-note horns, twin-blade screen wiper, cigar lighter, starter motor, vacuum and centrifugal automatic ignition advance.

INSTRUMENTS. 5 in. diameter 140 m.p.h. speedometer, 5 in. diameter revolution counter, ammeter, oil pressure gauge, water thermometer gauge, petrol gauge with warning light, electric clock.

BODY. Two-seater convertible; top covered in mohair with fully lined interior; top folds flat in stowed position; divided seat and squab separately adjustable for reach, upholstered in finest leather; drop windows of safety glass disappear completely when fully lowered; additional adjustable ventilating windows; heater, air conditioning, windscreen washer, sun visors, fitted as standard.

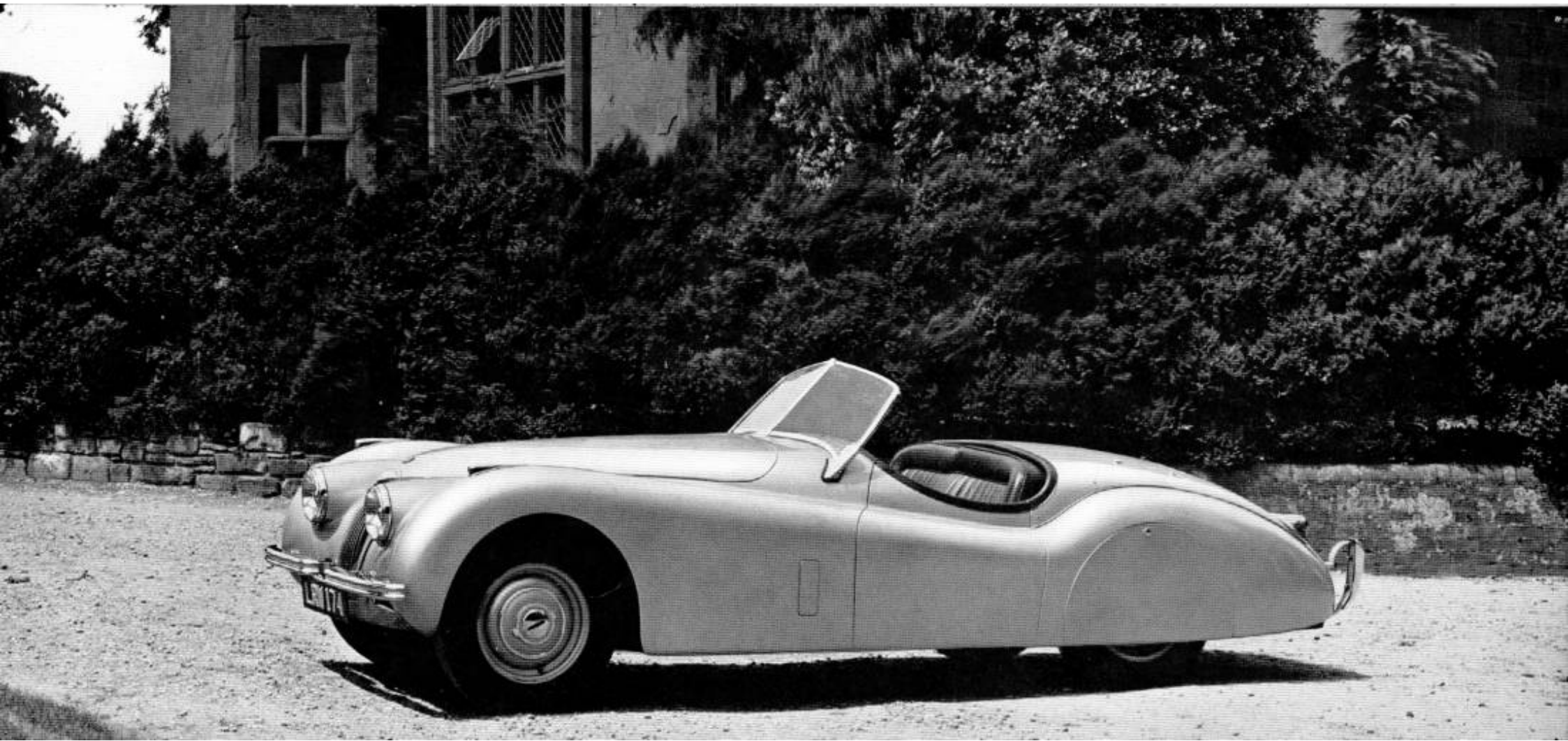
SPARE WHEEL AND TOOLS. The spare wheel is carried beneath the boot floor in a separate compartment and is readily accessible. The tools are carried in a special container fitted to the side of the luggage compartment.

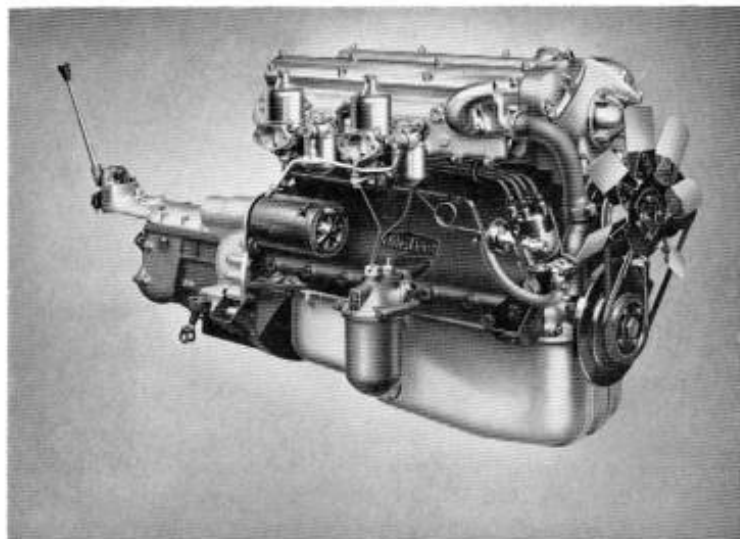
LUGGAGE ACCOMMODATION. Ample accommodation is provided in a capacious rear locker, provided with an automatic light. Additional space for light luggage and parcels is provided behind the seats.

EASY JACKING. Centrally located jacking slots on each side of the car enable front and rear wheels on either side to be raised simultaneously.

PRINCIPAL DIMENSIONS. Wheel base, 8 ft. 6 ins.; track front, 4 ft. 3 $\frac{1}{2}$ ins.; track rear, 4 ft. 2 $\frac{1}{2}$ ins.; overall length (over bumpers), 14 ft. 5 ins. approximately; overall width, 5 ft. 1 $\frac{1}{2}$ ins.; overall height (over hood), 4 ft. 4 $\frac{1}{2}$ ins.; (over windscreen), 4 ft. 1 $\frac{1}{2}$ ins.; ground clearance, 7 $\frac{1}{2}$ ins.; unladen turning circle, 31 ft. 0 ins.; dry weight, 26 $\frac{1}{2}$ cwt.

SPECIAL EQUIPMENT MODEL. In addition to the above specification a Special Equipment Model is available incorporating high lift camshafts and wire wheels.





The fine materials and workmanship which go into the production of the XK 120 engine are exemplified by the beautiful exterior finish of this engine which has carried Jaguars to victory in over 46 major international events in less than three years.

Specification 3 $\frac{1}{2}$ LITRE XK 120 OPEN 2-SEATER

ENGINE. Six cylinder $\frac{3}{4}$ litre Jaguar engine; 70° twin overhead camshafts driven by a two-stage duplex roller chain; 83 mm. bore x 106 mm. stroke; 3,442 c.c. developing 160 h.p. at 5,200 r.p.m.; large non-adjustable directly operated valves and austenetic cast-iron seats; compression ratio, 8 or 7:1; high grade chrome iron cylinder block, cooling by pump circulation with by-pass thermostat control; cylinder head of high tensile aluminium alloy with hemispherical combustion chambers; aluminium alloy pistons; steel connecting rods; forced lubrication throughout by submerged pump with full flow filter and floating gauze intake; twin S.U. horizontal carburettors with electrically controlled automatic choke; $2\frac{1}{4}$ in. diameter counterweighted crankshaft carried in seven large steel buckled precision bearings.

FRAME. Straight plane steel box section frame of immense strength; torsional rigidity ensured by large box section cross members.

TRANSMISSION. Four-speed single helical synchromesh gearbox, ground teeth gears running on needle bearings; synchromesh on 2nd, 3rd and top. Gear ratios: 1st and reverse, 11.95; 2nd, 7.01; 3rd, 4.84; top, 3.54. Optional axle ratios: 3.31, 3.77, 4.09, 4.27 and 4.55. Hardy Spicer propeller shaft in needle roller bearings; Borg & Beck 10 in. diameter single dry plate clutch; central gear lever with remote control.

SUSPENSION. Independent front suspension incorporating transverse wishbones and long torsion bars with Newton telescopic type hydraulic shock absorbers. Rear suspension by long silico-manganese steel half elliptic springs controlled by Girling FV.7 hydraulic shock absorbers. Rear springs totally enclosed in gaiters fitted with grease nipples.

BRAKES. Lockheed full hydraulic two-leading-shoe front and 12 in. drums; friction lining area, 297 square ins; front drums fitted with cooling ducts; central fly-off handbrake operating on the rear wheels only through a separate linkage.

STEERING. Burman re-circulating ball type steering, positive and accurate at all speeds; 17 in. Blumel adjustable wheel. Left or right-hand steering optional.

WHEELS AND TYRES. Pressed steel bolt-on disc wheels with wide base rim and Dunlop 6.00 x 16 in. road speed tyres.

FUEL SUPPLY. By a new large delivery S.U. electric pump from a 14 gallon rear tank with reserve supply and warning light; petrol filler cap concealed and fitted with lock and key.

ELECTRICAL EQUIPMENT. Lucas de luxe throughout, 12 volt, 64 amp. capacity, twin batteries with constant voltage controlled ventilated dynamo, 10 hour discharge, flush fitting head lamps and wing lamps, stop light, reverse light, twin rear lights, panel light, twin blended-note horns, twin-blade screen

wiper, cigar lighter, starter motor, vacuum and centrifugal automatic ignition advance.

INSTRUMENTS. 5 ins. diameter 140 m.p.h. speedometer, 5 in. diameter revolution counter, ammeter, oil pressure gauge, water thermometer gauge, petrol gauge with warning light, electric clock.

CAR HEATER. A built-in car heater is fitted as standard to all cars upwards of chassis serial numbers 671193 for left-hand drive and 660911 for right-hand drive; de-misters and windscreen washers fitted as standard equipment.

BODY. Aerodynamic two-seater body upholstered throughout in finest quality leather hide. Floor is thickly carpeted over felt underlay. A mono screen is available for competition work and is interchangeable with the touring screen.

SEATING. Divided seat and squab, folding forward for access to hood and battery; seats adjustable for reach. A tonneau cover is provided.

HOOD. Finest quality mohair material concealed behind seats when folded, fitted with unbreakable rear light and removable for competition work; detachable sidescreens stored in a tray in the hood compartment.

INTERIOR APPOINTMENTS. Instrument panel and garnish rails finished in first quality leather; capacious pockets in the doors.

SPARE WHEEL AND TOOLS. The spare wheel is carried beneath the boot floor in a separate compartment and is readily accessible. The tools and jack are carried in a special container fitted to the side of the luggage compartment, and the wheel brace is housed in the spare wheel compartment.

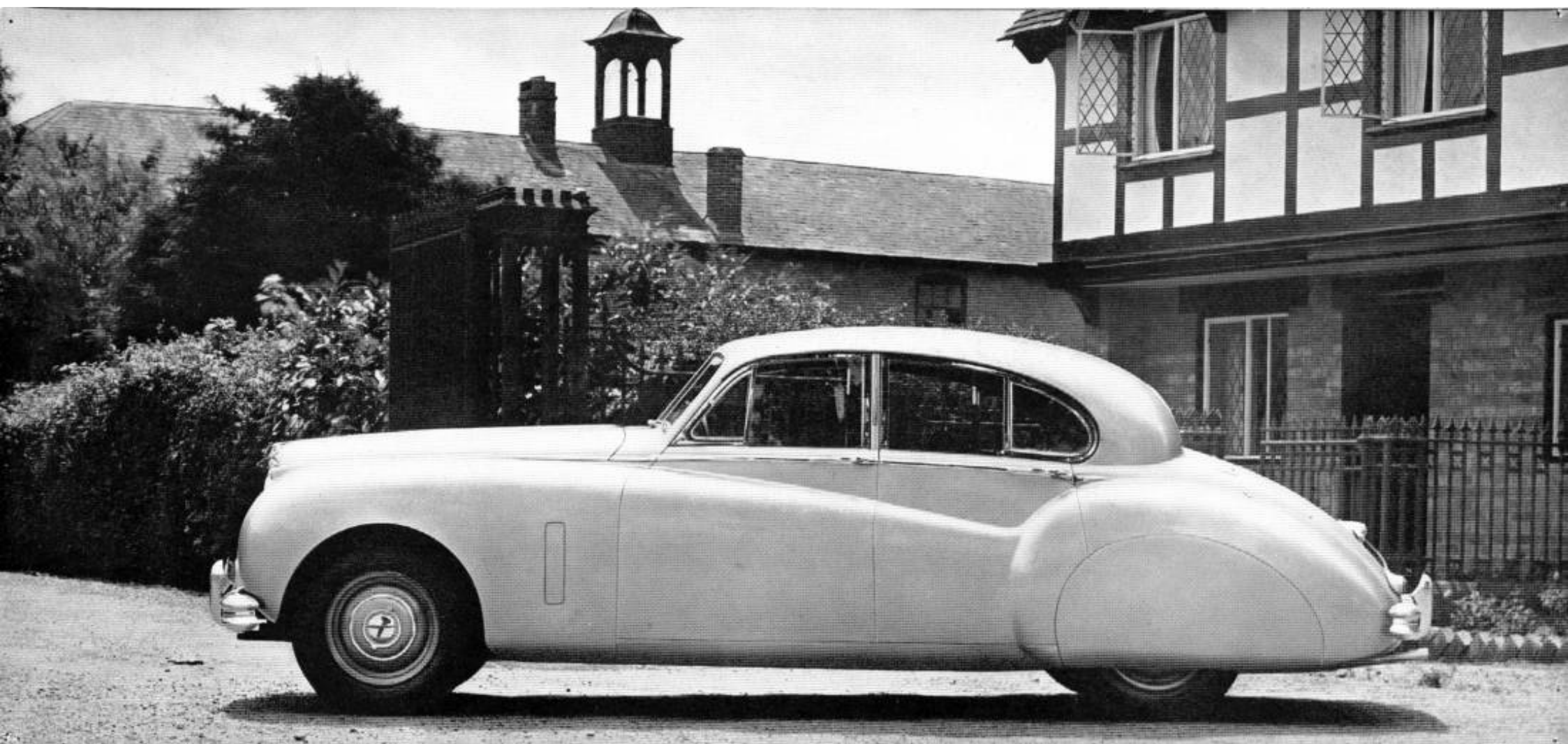
LUGGAGE ACCOMMODATION. Ample accommodation is provided in a capacious rear locker, provided with an automatic light.

EASY JACKING. A central jack on each side of the car raises both wheels simultaneously with the minimum of effort by means of a special easy-lift jack.

PRINCIPAL DIMENSIONS. Wheel base, 8 ft. 6 ins.; track front, 4 ft. $3\frac{1}{2}$ ins.; track rear, 4 ft. $2\frac{1}{2}$ ins.; overall length (over bumpers), 14 ft. 5 ins. approximately; overall width, 5 ft. $1\frac{1}{2}$ ins.; overall height (over hood), 4 ft. $4\frac{1}{2}$ ins.; (over windscreen), 4 ft. $1\frac{1}{2}$ ins.; ground clearance, $7\frac{1}{2}$ ins.; unladen turning circle, 31 ft. 0 ins.; dry weight, 24 cwt.

ALTERNATIVE EQUIPMENT. For sporting events an alternative 24 gallon fuel tank and two spare wheels can be supplied. This is not generally recommended owing to the considerable reduction in luggage accommodation. Bucket seats available at extra cost.

SPECIAL EQUIPMENT MODEL. In addition to the above specification a Special Equipment Model is available incorporating high lift camshafts, dual exhaust system and wire wheels.





Fitted only to the OVERDRIVE model the Laycock de Normanville unit has been specially modified to take the high torque and engine speed of the Jaguar XK engine. In addition the box is fitted with an automatic cut-out which operates below certain road speeds and virtually gives an automatic fifth speed with overriding manual control switch. A lower axle ratio is employed on this model so that extra acceleration in normal gear is obtained.

Specification 3 $\frac{1}{2}$ LITRE MARK VII SALOON OVERDRIVE MODEL

ENGINE DIMENSIONS. Six cylinder $3\frac{1}{2}$ litre Jaguar engine: 70° twin overhead camshafts driven by a two-stage duplex roller chain; 83 mm. bore \times 106 mm. stroke; 3,442 c.c. developing 160 b.h.p. at 5,200 r.p.m.; large non-adjustable directly operated valves and austenitic cast-iron seats; compression ratio, 8 or 7:1; high grade chrome iron cylinder block, cooling by pump circulation with by-pass thermostat control; cylinder head of high tensile aluminium alloy with hemispherical combustion chambers; aluminium alloy pistons; steel connecting rods; forced lubrication throughout by submerged pump with full flow filter and gauze intake; twin S.U. horizontal carburetters with electrically controlled automatic choke; $2\frac{1}{4}$ in. diameter counterweighted crankshaft carried in seven large steel backed precision bearings.

FRAME. Straight plane steel box section frame of immense strength; torsional rigidity ensured by large box section cross members.

TRANSMISSION. Four-speed helical, synchromesh gearbox with overdrive on top gear. Borg & Beck single 10 in. dry plate clutch. Gear ratios: 1st and reverse, 15.35; 2nd, 9.015; 3rd, 6.222; top, 4.55; overdrive, 3.538.

SUSPENSION. Independent front suspension incorporating transverse wishbones and long torsion bars with shock absorbers. Rear suspension by long silico-manganese steel half elliptic springs controlled by shock absorbers. Rear springs totally enclosed in gaiters fitted with grease nipples.

BRAKES. Girling Dewandre, vacuum servo-assisted, self-adjusting hydraulic; brake drum diameter, 12 ins.; friction lining area, 179 square ins.; handbrake lever flush between front seats.

STEERING. Burman re-circulating ball type steering with 18 in. diameter adjustable steering wheel. Left or right-hand steering optional.

WHEELS AND TYRES. Pressed steel bolt-on disc wheels with wide base rim and Dunlop 6.70 \times 16 in. super-comfort low pressure tyres.

FUEL SUPPLY. S.U. electric fuel pump; fuel capacity, 17 imperial gallons in two separate tanks of nine and eight gallons capacity respectively with turn-over control switch on instrument panel.

ELECTRICAL EQUIPMENT AND INSTRUMENTS. Lucas 12 volt, 64 amp. capacity battery with constant voltage controlled ventilated dynamo, 10 hour discharge, flush fitting head lamps and wing lamp, stop light, reverse light,

twin rear lights, panel light automatic and manually controlled interior lights, twin blended-note horns, twin-blade screen wiper, cigar lighter, starter motor, vacuum and centrifugal automatic ignition advance.

INSTRUMENTS. 5 in. diameter 120 m.p.h. speedometer, 5 in. diameter revolution counter, ammeter, oil pressure gauge, water thermometer gauge, fuel gauge, electric clock, self-cancelling trafficators with warning light.

HEATER AND AIR CONDITIONING. Built-in heater with controlled warm air flow and incorporating windscreen de-froster. Large scuttle vents for additional cooling in hot weather.

WINDSCREEN WASHER. Vacuum-operated windscreen washer with control button fitted to the instrument panel.

BODY. All steel full five-seater (six-seater optional) with sliding roof; four doors; special security locks to rear doors for child safety; upholstered in finest quality Vaumol leather over foam rubber; polished walnut instrument panel and interior garnishings; two glove compartments with locks; five ashtrays; padded armrests; deep pile carpets over thick felt underlay; windscreen washer fitted as standard equipment.

LUGGAGE ACCOMMODATION. The extraordinarily capacious luggage locker enables four large suitcases, four sets of golf clubs, also rugs, holdalls and other travelling sundries to be carried in its totally enclosed interior. The volume provided for the carrying of luggage is 17 cubic feet.

SPARE WHEEL. Fitted with tyre and tube and carried in luggage compartment with necessary tools for wheel changing.

TOOLS. A complete set of hand tools and small replacement items are carried in special flush fitting compartments concealed in the front doors.

EASY JACKING. Exterior jack slots, conveniently placed, enable the car to be lifted with minimum effort by means of jack provided.

PRINCIPAL DIMENSIONS. Wheelbase, 10 ft. 0 ins.; track front, 4 ft. 8 $\frac{1}{2}$ ins.; track rear, 4 ft. 10 ins.; overall length, 16 ft. 4 $\frac{1}{2}$ ins.; overall width, 6 ft. 1 in.; overall height, 5 ft. 3 ins.; ground clearance, 7 $\frac{1}{2}$ ins.; turning circle, 36 ft. 0 in.; dry weight, 33 cwt.

Printed in England by A.B.&S., Leicester and London





The handsome polished walnut instrument panel is fitted with a comprehensive range of large, easily read instruments.

Specification 3 $\frac{1}{2}$ LITRE MARK VII SALOON

ENGINE DIMENSIONS. Six cylinder $3\frac{1}{2}$ litre Jaguar engine; 70° twin overhead camshafts driven by a two-stage duplex roller chain; 83 mm. bore x 106 mm. stroke; 3,442 c.c. developing 160 h.p. at 5,200 r.p.m.; large non-adjustable directly operated valves and austenitic cast-iron seats; compression ratio, 8 or 7 : 1; high grade chrome iron cylinder block, cooling by pump circulation with by-pass thermostat control; cylinder head of high tensile aluminium alloy with hemispherical combustion chambers; aluminium alloy pistons; steel connecting rods; forced lubrication throughout by submerged pump with full flow filter and gauze intake; twin S.U. horizontal carburettors with electrically controlled automatic choke; $2\frac{1}{2}$ in. diameter counterweighted crankshaft carried in seven large steel backed precision bearings.

FRAME. Straight plane steel box section frame of immense strength; torsional rigidity ensured by large box section cross members.

TRANSMISSION. Four-speed single helical synchromesh gearbox, ground teeth gears running in needle bearings; synchromesh on 2nd, 3rd and top. Borg & Beck single 10 in. dry plate clutch. Gear ratios: 1st and reverse, 14.4 : 1; 2nd, 8.46 : 1; 3rd, 5.84 : 1; top, 4.27 : 1; central remote control gear lever.

SUSPENSION. Independent front suspension incorporating transverse wishbones and long torsion bars with shock absorbers. Rear suspension by long silica-manganese steel half elliptic springs controlled by shock absorbers. Rear springs totally enclosed in gaiters fitted with grease nipples.

BRAKES. Girling Dewandre, vacuum servo-assisted, self-adjusting hydraulic; brake drum diameter, 12 ins.; friction lining area, 179 square ins.; handbrake lever flush between front seats.

STEERING. Burman re-circulating ball type steering with 18 in. diameter adjustable steering wheel. Left or right-hand steering optional.

WHEELS AND TYRES. Pressed steel bolt-on disc wheels with wide base rim and Dunlop 6.70 x 16 in. super-comfort low pressure tyres.

FUEL SUPPLY. S.U. electric fuel pump; fuel capacity, 17 imperial gallons in two separate tanks of nine and eight gallons capacity respectively with turn-over control switch on instrument panel.

ELECTRICAL EQUIPMENT AND INSTRUMENTS. Lucas 12 volt, 64 amp. capacity battery with constant voltage controlled ventilated dynamo, 10 hour discharge, flush fitting head lamps and wing lamp, stop light, reverse light,

twin rear lights, panel light automatic and manually controlled interior lights, twin blended-note horns, twin-blade screen wiper, cigar lighter, starter motor, vacuum and centrifugal automatic ignition advance.

INSTRUMENTS. 5 in. diameter 120 m.p.h. speedometer, 5 in. diameter revolution counter, ammeter, oil pressure gauge, water thermometer gauge, fuel gauge, electric clock, self-cancelling trafficators with warning light.

HEATER AND AIR CONDITIONING. Built-in heater with controlled warm air flow and incorporating windscreen de-froster. Large scuttle vents for additional cooling in hot weather.

WINDSCREEN WASHER. Vacuum-operated windscreen washer with control button fitted to the instrument panel.

BODY. All steel full five-seater (six-seater optional) with sliding roof; four doors; special security locks to rear doors for child safety; upholstered in finest quality Vaumol leather over foam rubber; polished walnut instrument panel and interior garnishings; two glove compartments with locks; five ashtrays; padded armrests; deep pile carpets over thick felt underlay; windscreen washer fitted as standard equipment.

LUGGAGE ACCOMMODATION. The extraordinarily capacious luggage locker enables four large suitcases, four sets of golf clubs, also rugs, holdalls and other travelling sundries to be carried in its totally enclosed interior. The volume provided for the carrying of luggage is 17 cubic feet.

SPARE WHEEL. Fitted with tyre and tube and carried in luggage compartment with necessary tools for wheel changing.

TOOLS. A complete set of hand tools and small replacement items are carried in special flush fitting compartments concealed in the front doors.

EASY JACKING. Exterior jack slots, conveniently placed, enable the car to be lifted with minimum effort by means of jack provided.

PRINCIPAL DIMENSIONS. Wheelbase, 10 ft. 0 ins.; track front, 4 ft. 8 $\frac{1}{2}$ ins.; track rear, 4 ft. 10 ins.; overall length, 16 ft. 4 $\frac{1}{2}$ ins.; overall width, 6 ft. 1 in.; overall height, 5 ft. 3 ins.; ground clearance, 7 $\frac{1}{2}$ ins.; turning circle, 36 ft. 0 in.; dry weight, 33 cwt.