

THE NEW LINE OF **JAGUAR** CARS

---

**JAGUAR** "offers a standard of performance and finish found only in cars normally costing twice as much money"...thus wrote the famous Museum of Modern Art in New York, when it featured Jaguar cars in a special exhibition.

Powered by the world famous Jaguar XK engine, five times winner of the LeMans 24-hour sports car race, each model is pre-eminent in its own particular field. The new line of Jaguar cars represents the most compelling and comprehensive selection of high performance cars available anywhere.

XK-E ROADSTER • XK-E COUPE • XK-E 2 + 2 COUPE • 340 SEDAN • 420 SEDAN • 420G SEDAN







# JAGUAR

4.2 LITRE

## E-TYPE

SPORTS ROADSTER



**ENGINE.** Six cylinder 4.2 litre "XK" engine with twin overhead camshafts and three carburetors. 3.63 bore X 4.17 stroke. Displacement, 4,235 c.c., 258.4 cu. ins., 265 b.h.p. at 5,400 r.p.m. Compression ratio 9 to 1. Pressurized cooling system with thermostatically controlled, electrically driven fan.

**TRANSMISSION.** Manually operated four-speed all-synchromesh gearbox.

**SUSPENSION.** (Front) Independent suspension — transverse wishbones and torsion bars and telescopic hydraulic dampers. (Rear) Fully independent suspension incorporating, on each side, a lower transverse tubular link pivoted at wheel carrier and subframe adjacent to differential case and, above this, a half-shaft universally jointed at each end. Twin coil springs at each road wheel, each enclose a telescopic damper.

**BRAKES.** Self-adjusting servo-assisted disc brakes all round. Independent hydraulic circuits to front and rear brakes.

**STEERING.** Rack and pinion steering. 2½ turns lock to lock. Turning circle 37 ft.

**WHEELS & TIRES.** Wire spoke wheels with centre lock hubs. Dunlop high performance tires.

**FUEL SUPPLY.** 16½ gallon capacity tank. S.U. electric pump.

**ELECTRICAL EQUIPMENT & INSTRUMENTS.** Alternator. 12-volt battery with negative earth system. Pre-engaged starter motor. Extensive standard equipment includes sealed beam headlamps and headlamp flashing unit, map reading lamp, reversing lamp, triple blade two-speed windshield wipers, windshield washers, cigar lighter and comprehensive instrumentation to Jaguar normal high standards.

**BODY.** Stressed steel two-door two-seater body of monocoque construction. Folding hood with large rear window. (Hard top available as optional extra.) Twin bucket seats upholstered in finest quality leather hide over deep Dunlopillo cushions. Deep pile carpets over thick felt underlay. Seat belt anchorages incorporated.

**HEATING & DEMISTING.** High output fresh air heating and multi-point windscreen demisting system. Ducts direct air to each side of car. Two-speed fan.

**SPARE WHEEL & TOOLS.** Spare wheel housed beneath luggage boot floor. Comprehensive set of tools. Screw-type easy-lift jack.

**PRINCIPAL DIMENSIONS.** Wheelbase 96 ins., track front and rear 50 ins., overall length 175¼ ins., overall width 65¼ ins., overall height 46½ ins. Dry Weight, 2,464 lbs.







**ENGINE.** Six cylinder 4.2 litre 'XK' engine with twin overhead camshafts and three carburetors. 3.63 bore X 4.17 stroke. Capacity 4,235 c.c. 258.4 cu. ins., 265 b.h.p. at 5,400 r.p.m. Compression ratio 9 to 1 Pressurised cooling system with thermostatically controlled, electrically driven fan.

**TRANSMISSION.** Manually operated four-speed all-synchromesh gearbox.

**SUSPENSION.** (Front) Independent suspension—transverse wishbones and torsion bars and telescopic hydraulic dampers. (Rear) Fully Independent suspension incorporating, on each side, a lower transverse tubular link pivoted at wheel carrier and subframe adjacent to differential case and, above this, a half-shaft universally jointed at each end. Twin coil springs at each road wheel, each enclose a telescopic damper.

**BRAKES.** Self-adjusting servo-assisted disc brakes all round. Independent hydraulic circuits to front and rear brakes.

**STEERING.** Rack and pinion steering, 2½ turns lock to lock. Turning circle 37 ft.

**WHEELS & TIRES.** Wire spoke wheels with centre lock hubs. Dunlop high performance tires.

**FUEL SUPPLY.** 16½ gallon capacity tank. S.U. electric pump.

**ELECTRICAL EQUIPMENT & INSTRUMENTS.** Alternator. 12-volt battery with negative earth system. Pre-engaged starter motor. Extensive standard equipment includes sealed beam headlamps and headlamp flashing unit, map reading lamp, reversing lamp, triple blade two-speed windshield wipers, windshield washers, cigar lighter and comprehensive instrumentation to Jaguar normal high standards.

**BODY.** Stressed steel two-door two-seater body of monocoque construction. Twin bucket seats upholstered in first quality leather hide over deep Dunlopillo cushions. Deep pile carpets over thick felt underlay. Seat belt anchorages incorporated.

**HEATING & DEMISTING.** High output fresh air heating and multi-point windscreen demisting system. Ducts direct air to each side of car. Two-speed fan.

**SPARE WHEEL & TOOLS.** Spare wheel housed beneath luggage boot floor. Comprehensive set of tools. Screw-type easy-lift jack.

**PRINCIPAL DIMENSIONS.** Wheelbase 96 ins. track front and rear 50 ins., overall length 175½ ins., overall width 65½ ins., overall height 48 ins. Dry Weight, 2,520 lbs.



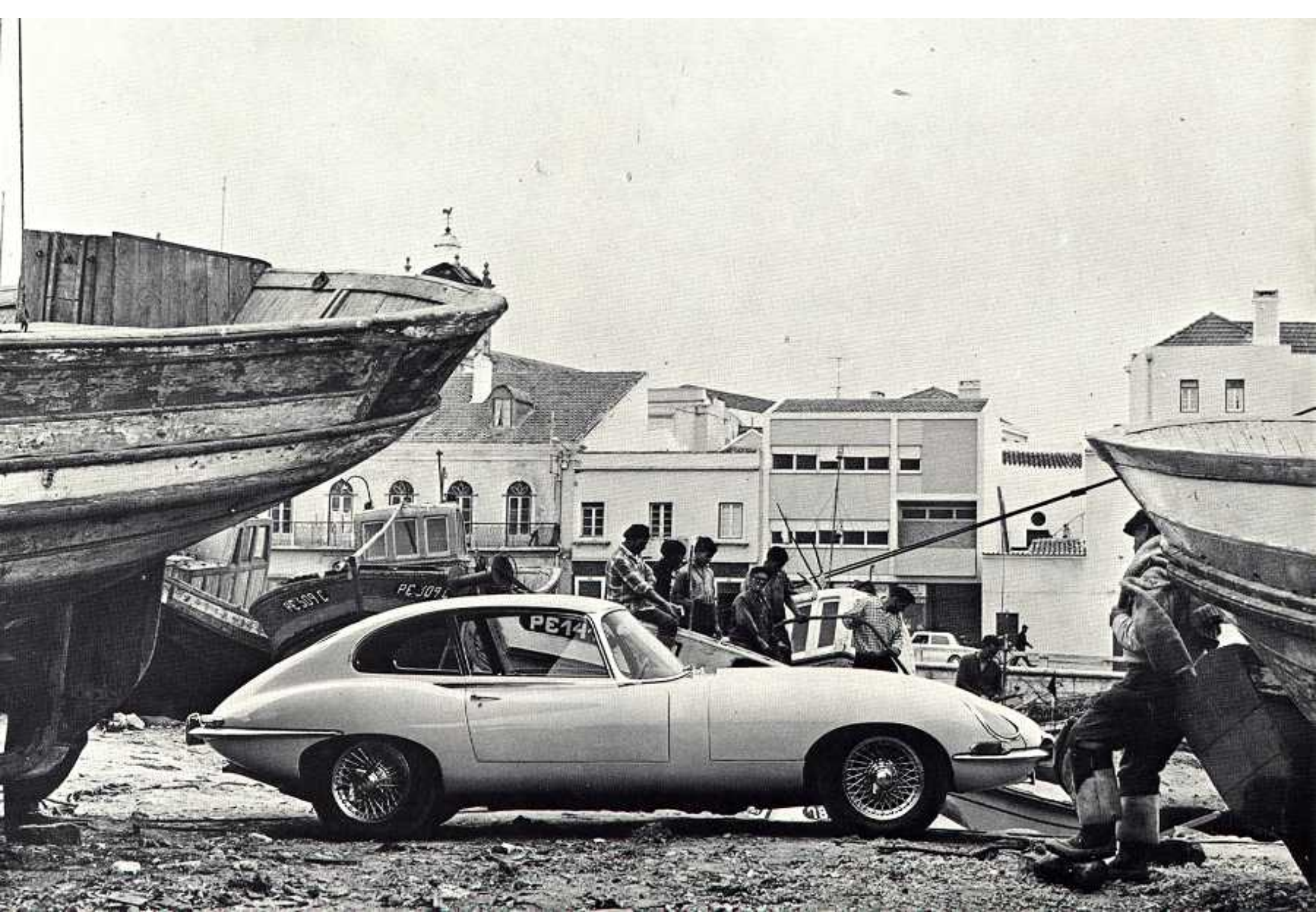
# JAGUAR

4.2 LITRE

## E-TYPE

HARD TOP COUPE







# JAGUAR

4.2 LITRE

## E-TYPE 2+2

FAMILY COUPE



**ENGINE.** Six cylinder 4.2 litre 'XK' engine with twin overhead camshafts and three carburetors. 3.63 ins. bore X 4.17 ins. stroke. Displacement 4,235 c.c., 258.4 cu ins. 265 b.h.p. at 5,400 r.p.m. Compression ratio 9 to 1. Pressurised cooling system with thermostatically controlled electric fan.

**TRANSMISSION.** (Manual) Four-speed all-synchromesh gearbox. Centrally positioned gear change lever. (Automatic) Borg Warner Model 3 with dual drive range D1/D2. Selector level operates in quadrant on gearbox tunnel.

**SUSPENSION.** (Front) Independent by transverse wishbones and torsion bars with telescopic hydraulic dampers. (Rear) Fully independent, having on each side, a lower transverse tubular link pivoted at the rear wheel carrier and subframe adjacent to differential case and, above this, a half-shaft universally jointed at each end. Twin coil springs at each road wheel, each enclose a telescopic damper.

**BRAKES.** Self-adjusting servo-assisted disc brakes all round. Independent hydraulic circuit to front and rear brakes.

**STEERING.** Rack and pinion steering. 2.85 turns lock to lock. Turning circle 41 ft.

**WHEELS & TIRES.** Wire spoke wheels with centre lock hubs. Dunlop high performance tires.

**FUEL SUPPLY.** 16 1/4 gallons capacity tank. S.U. electric pump.

**ELECTRICAL EQUIPMENT & INSTRUMENTS.** Alternator. 12-volt battery with negative earth system. Pre-engaged starter motor. Extensive standard equipment includes sealed beam headlamps and headlamp flashing unit, reversing lamp, map reading lamp, cigar lighter, triple-blade two-speed windshield wiper, windshield washers, and comprehensive instrumentation to Jaguar normal high standards.

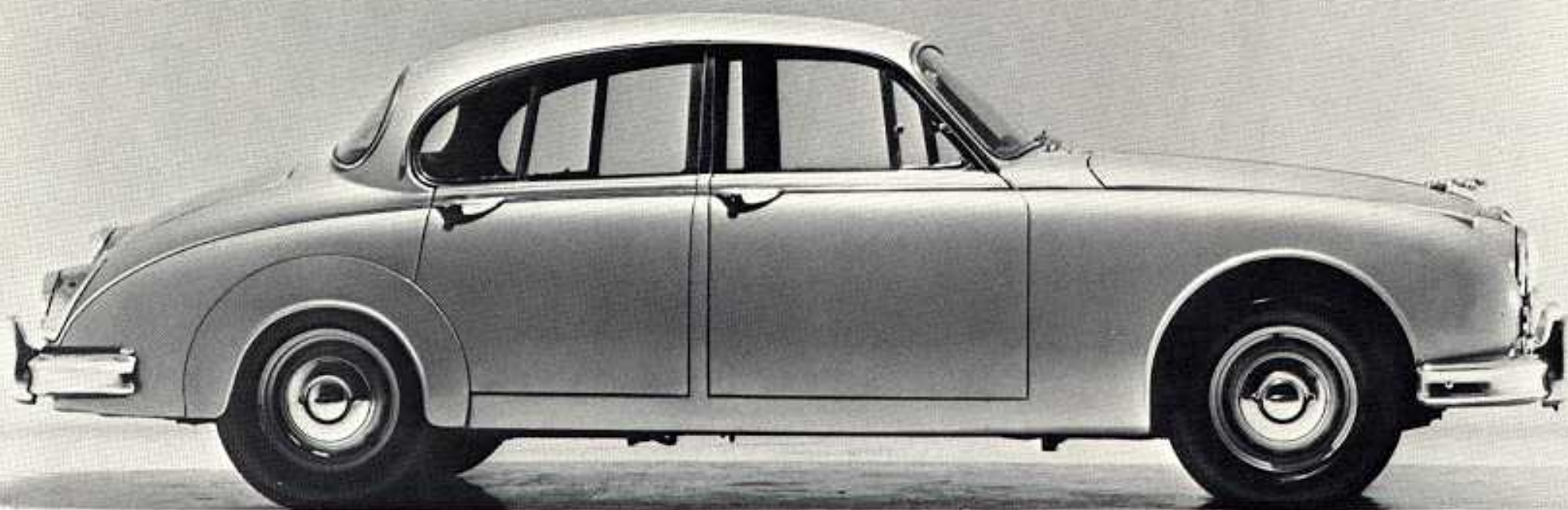
**BODY.** Two-door, stressed steel monocoque body incorporating four seats fully upholstered in finest quality leather hide over deep Dunlopillo cushions. Top section of rear seat squab moves forward, extending floor to give 25% more luggage space when car is used as two-seater. Deep pile carpets over thick underlay. Seat belt anchorages incorporated.

**HEATING & DEMISTING.** High output fresh air heating system gives rapid defrosting and demisting of windscreen. Variable direction nozzles controlled individually by front seat occupants.

**SPARE WHEEL & TOOLS.** Spare wheel housed beneath boot floor. Comprehensive set of tools. Screw type easy-lift jack.

**PRINCIPAL DIMENSIONS.** Wheelbase 105 ins., track front and rear 50 ins., overall length 184 1/2 ins., overall width 65 1/4 ins., overall height 50 ins. Dry Weight, 2,772 lbs.







# JAGUAR

## 340

3.4 LITRE SEDAN

**ENGINE.** Six cylinder 'XK' engine, 70° twin overhead camshafts, twin carburetors 3.4 Litre: 3.27 ins. bore X 4.17 ins. stroke, capacity 3,442 c.c., 210.6 cu. ins., 210 b.h.p. at 5,500 r.p.m. Compression ratio 8 to 1.

**TRANSMISSION.** (Manual) Four-speed all-synchromesh gearbox; gear change lever on floor between front seats. Hypoid rear axle ratio 3.54 to 1. (Automatic) Borg Warner automatic transmission with driver controlled intermediate gear hold. Ratio 3.54 to 1. Selector lever on steering column.

**SUSPENSION.** (Front) Independent suspension — semi-trailing wishbones, coil springs with telescopic shock absorbers. (Rear) Trailing link suspension — cantilever semi-elliptic springs, radius arms, telescopic shock absorbers.

**BRAKES.** Servo-assisted disc brakes featuring quick-change pads.

**STEERING.** Power assisted steering. Burman re-circulating ball type. 4.7 turns lock to lock. Turning circle 33½ ft.

**WHEELS & TIRES.** Pressed steel bolt-on disc wheels, Dunlop high performance tires. Wire spoke wheels with centre lock hubs available as optional extra.



**FUEL SUPPLY.** 14½ gallon tank. S.U. electric pump.

**ELECTRICAL EQUIPMENT & INSTRUMENTS.** 12-volt electrical system. Extensive equipment includes headlamp flashing unit, reversing lamp, twin-blade two-speed windshield wipers, windshield washers, cigar-lighter, all fitted as standard. Comprehensive instrumentation to Jaguar normal high standards.

**BODY.** All steel four-door five-seater sedan. Seats upholstered in vinyl over deep Dunlopillo cushions. Armrests fitted to front and rear doors. Central folding armrests in rear compartment. Tufted carpets over felt underlay. Seat belt anchorage points front and rear. 13½ cubic feet capacity luggage trunk.

**HEATING & DEMISTING.** High output system with separate heating duct to rear compartment. Two speed booster fan.

**SPARE WHEEL & TOOLS.** Spare wheel housed beneath boot floor. Jack and wheelbrace. Hammer, with wire spoke wheels.

**PRINCIPAL DIMENSIONS.** Wheelbase 107¾ ins., track front 55 ins., track rear 53½ ins., overall length 180½ ins., overall width 66½ ins., overall height 57½ ins. Dry Weight, 3,080 lbs.







# JAGUAR

## 420

### 4.2 LITRE SPORTS SEDAN

**ENGINE.** Six cylinder 4.2 litre 'XK' engine with twin overhead camshafts and twin carburetors. 3.62 ins. bore X 4.17 ins. stroke. Displacement 4,235 c.c., 258.4 cu. ins., 245 b.h.p. at 5,500 r.p.m. Compression ratio 9 to 1. New cooling system incorporates cross-flow tube and fin radiator block, fluid drive speed-control fan and improved water pump.

**TRANSMISSION.** (Manual) Four-speed all synchromesh gearbox; gear change lever on floor between front seats. Rear axle ratio 3.54 to 1. (Overdrive) As above, ratio 3.77 to 1, with addition of a Laycock de Normanville overdrive controlled by lever on steering column. Overdrive ratio, 2.93 to 1. (Automatic) Borg Warner Model B automatic transmission with dual drive range D1/D2. Ratio, top, 3.31 to 1. Selector lever on steering column. Limited slip differential.

**SUSPENSION.** (Front) Independent suspension—semi-trailing wishbones, coil springs with telescopic dampers. (Rear) Fully independent suspension incorporating, on each side, a lower transverse tubular link pivoted at wheel carrier and sub-frame adjacent to differential case and, above this, a half-shaft universally jointed at each end. Twin coil springs at each road wheel, each enclose a telescopic hydraulic damper.

**BRAKES.** Self-adjusting, servo-assisted disc brakes all round. Independent hydraulic circuit to front and rear brakes. Self-adjusting handbrake.

**STEERING.** "Varamatic" variable ratio power steering. Turning circle 33½ ft.

**WHEELS & TIRES.** Pressed steel bolt-on disc wheels. Dunlop high performance tires. Wire spoke wheels with centre lock hubs available as optional extra.



**FUEL SUPPLY.** Two separate tanks with concealed fillers. Total capacity 16½ gallons. Two S.U. electrical pumps. Changeover switch on facia panel.

**ELECTRICAL EQUIPMENT & INSTRUMENTS.** Alternator. 12-volt battery with negative earth system. Extensive equipment includes four headlamp system, headlamp flashing unit, twin reversing lamps, map reading lamp, cigar lighter, twin-blade two-speed windshield wipers, windshield washers, pre-engaged starter motor, all fitted as standard. Comprehensive instrumentation to Jaguar normal high standards.

**BODY.** All steel four-door five-seater sedan. Seats upholstered in quality leather hide over deep Dunlopillo cushions. Front seats feature reclining backrests. Central folding armrests front and rear. Deep pile carpets. Safety padded instrument panel. "Zero-torque" door locks. Seat belt anchorage points front and rear. 19 cubic feet capacity luggage trunk.

**HEATING & DEMISTING.** High output system. Separate control regulates supply to rear compartment. Two-speed fan.

**SPARE WHEEL & TOOLS.** Spare wheel housed beneath boot floor. Set of tools in fitted and lined container. Jack and wheelbrace. Hammer, with wire spoke wheels.

**PRINCIPAL DIMENSIONS.** Wheelbase 107¾ ins., track front 55½ ins., track rear 54¼ ins., overall length 187¼ ins., overall width 66¼ ins. Dry Weight, 3,472 lbs.





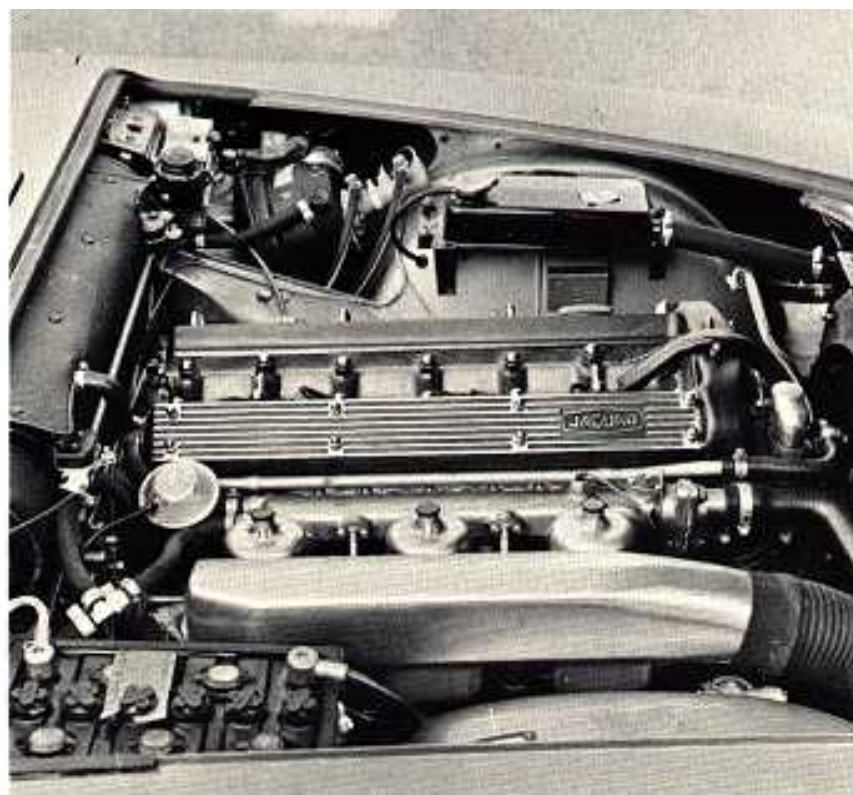


# JAGUAR

## 420 G

### 4.2 LITRE GRAND SALOON

The largest model in the Jaguar line



**ENGINE.** Six cylinder 4.2 litre 'XK' engine with twin overhead camshafts and three carburetors. 3.62 ins. bore X 4.17 ins. stroke. Capacity 4,235 c.c., 258.4 cu. ins., 265 b.h.p. at 5,400 r.p.m. Compression ratio 9 to 1. New cooling system incorporates cross-flow tube and fin radiator block, fluid drive speed-control fan and improved water pump.

**TRANSMISSION.** (Manual) Four-speed all-synchromesh gearbox; gear change lever on floor between front seats. (Overdrive) As above, with addition of a Laycock de Normanville overdrive controlled by lever on steering column. (Automatic) Borg Warner Model 8 automatic transmission with dual drive range D1/D2. Hypoid rear axle ratio 3.54 to 1. Selector lever on steering column. Lifted slip differential.

**SUSPENSION.** (Front) Independent suspension — double wishbones, coil springs with telescopic shock absorbers. (Rear) Fully independent suspension incorporating, on each side, a lower transverse link pivoted at wheel carrier and subframe adjacent to differential case and, above this, a half-shaft universally jointed at each end. Twin coil springs at each road wheel, each enclose a telescopic hydraulic damper.

**BRAKES.** Self-adjusting, servo-assisted disc brakes all round. Independent hydraulic circuits to front and rear. Self-adjusting handbrake.

**STEERING.** "Varamatic" variable ratio power steering. 2.75 turns lock to lock. Turning circle 37 ft.

**WHEELS & TIRES.** Pressed steel bolt-on wheels. Dunlop high performance tires.

**FUEL SUPPLY.** Twin tanks, total capacity 24 gallons. Twin electric pumps. Separate concealed lockable fillers. Change-over switch on facia panel.

**ELECTRICAL EQUIPMENT & INSTRUMENTS.** Alternator. 12-volt battery with negative earth system. Extensive equipment includes — Four headlamp system, headlamp flashing unit, twin reversing lamps, map reading lamp, cigar lighter, twin-blade two-speed windshield wipers, windshield washers, transistorised clock, all fitted as standard. Comprehensive instrumentation to Jaguar normal high standards.

**BODY.** All steel four-door five seater sedan. Luxurious upholstery in ventilated leather hide over deep Dunlopillo cushions. Central folding armrests front and rear. Reclining front seats with flush fitting mirrored picnic trays in backs of squabs. Deep pile carpets over thick felt underlay. Padded safety screen rail. Seat belt anchorage points front and rear. 27 cubic feet capacity luggage trunk.

**HEATING & DEMISTING.** High output system. Regulation for temperature, volume and direction of air for each side. Separate ducting to rear compartment.

**SPARE WHEEL & TOOLS.** Spare wheel housed in luggage boot and fully trimmed to protect luggage. Comprehensive set of tools in special container.

**PRINCIPAL DIMENSIONS.** Wheelbase 120 ins. track front and rear 58 ins., overall length 202 ins., overall width 76 $\frac{1}{2}$  ins., overall height 54 $\frac{1}{2}$  ins. Dry Weight, 3,920 lbs.



# JAGUAR

## CAR COLOR GUIDE (North America)

### EXTERIOR

Cream  
Beige  
Willow Green  
Dark Blue  
Black  
Carmen Red  
Opalescent Silver Grey  
Opalescent Silver Blue  
Golden Sand  
Opalescent Dark Green  
Opalescent Lt. Maroon  
Pale Primrose\*

### INTERIOR TRIMS

Red, Light Blue, Dark Blue, Black\*  
Red, Light Tan  
Suede Green, Light Tan, Beige, Grey  
Red, Light Blue, Grey  
Red, Grey, Tan, Light Tan  
Red, Beige, Black\*  
Red, Light Blue, Dark Blue, Grey  
Dark Blue, Grey  
Red, Light Tan  
Suede Green, Beige, Tan, Light Tan  
Maroon, Beige  
Black\*, Beige\*

(\* On E-type only)

(Black upholstery also available to special order)



### **TWO-TONE (420G SEDANS ONLY)**

Black/Golden Sand  
Black/Opalescent Silver Grey  
Dark Blue/Opalescent Silver Blue  
Dark Green/Willow Green

(Interior trim colors same  
as for exterior colors above)

### **340 SEDANS ONLY**

Black  
Cream  
Carmen Red  
Dark Blue  
Beige  
Willow Green

Interior Trims: Black,  
Dark Blue and Red



**Optional Equipment** available on all Jaguar models includes air conditioning, radio, whitewall tires, tinted glass and heated rear window.

The color finishes and combinations described are those in current use at the time of publication of this booklet. Jaguar Cars Ltd. reserves the right to alter or withdraw any color finish without notice.

The issue of this catalog does not constitute an offer. Jaguar Cars Ltd. reserves the right to amend specifications at any time without notice.



