
X
X-TYPE




JAGUAR
THE ART of PERFORMANCE



JAGUAR
X
X-TYPE



Sport interior. For instant adrenaline,
just start the V6.

Sport Interieur. V6-Power mit jeder
Faser genießen.

Interni della versione Sport. Avviate il
motore V6: è adrenalina pura!

Découvrez l'intérieur de la version Sport et
démarrez le V6 : quelle émotion!



Interior deportivo. Para subir la adrenalina,
arranque el V6.

U wilt dynamiek? Kies het sportinterieur, start de krachtige
V6 en ervaar hoe bijzonder iedere kilometer kan zijn.

スポーツインテリア。V6エンジンを始動
する。沸き上がるアドレナリン。



JAGUAR
X
S-TYPE



Turn off the 120 watt sound system to be entertained by the performance.

Schalten Sie den CD-Player aus und genießen Sie Jaguar Performance pur.

Spegnete l'impianto stereo da 120 W: l'intrattenimento è offerto dalle prestazioni.

Coupez les 120 Watt du système audio et appréciez les performances!



Apague el sistema de sonido de 120 vatios para disfrutar de las prestaciones.

Of geniet van de luxe en stijl van deze compacte Jaguar, van z'n high-tech en het 120 watt audiosysteem.

純粹にクルマのパフォーマンスを楽しみたい方は、120Wのサウンドシステムをオフに。

X-TYPE. The difference is in the detail.

X-TYPE. Details machen den Unterschied.

X-TYPE: la differenza sta nei dettagli.

X-TYPE, le souci du détail!

X-TYPE. La diferencia está en los detalles.

X-TYPE. In elk detail even onderscheidend als overtuigend.

X-TYPE。違いは、ディテールにも現れる。



JAGUAR
X
X-TYPE



Visit our web site to download your copy of 2Sync organiser software and for further information.

Besuchen Sie unsere Website für weitere Informationen und um sich den Jaguar 2Sync Organizer herunterzuladen.

Visitate il nostro sito web per scaricarvi una copia del software organizer 2Sync e per ulteriori informazioni.

Connectez-vous sur notre site Internet pour recevoir de plus amples informations et téléchargez l'agenda électronique 2Sync conçu pour vous !

Visite nuestra página web para bajarse su copia del software de agenda 2Sync organiser y para mayor información.

Bezoek onze website voor meer informatie over de Jaguar X-TYPE en download meteen de unieke 2Sync organiser.

最新の情報は、ジャガーのウェブサイトをご覧ください。

Paint colours - Aussenfarben - Colori della carrozzeria - Peintures extérieures - Colores de pintura - Lakkleuren - ボディカラー

*Metallic - *Metallic - *Metallizzati - *Métallisée - *Metalizada - *Metallic - *メタリック



White Onyx



Anthracite*



Pacific*



Phoenix



Adriatic*



Carnival*



British
Racing
Green



Titanium*



Platinum*



Westminster



Topaz*



Emerald*

Wheel options
Felgendesign
Opzioni cerchi
Jantes
Opciones de llantas
Velgen
オプションホイール



6.5" x 16" X-10 alloy
6.5" x 16" Leichtmetallfelgen
Design „10 Spoke“
Cerchi in lega X-10 6,5" x 16"
Jantes en alliage 6,5" x 16" X-10
De aleación X-10, 6,5" x 16"
Lichtmetaal 6.5" x 16" 10-spaaks
6.5" X 16" X-10 アロイホイール



6.5" x 16" X-5 alloy
6.5" x 16" Leichtmetallfelgen
Design „5 Spoke“
Cerchi in lega X-5 6,5" x 16"
Jantes en alliage 6,5" x 16" X-5
De aleación X-5, 6,5" x 16"
Lichtmetaal 6.5" x 16" 5-spaaks
6.5" X 16" X-5 アロイホイール



7" x 17" X-Sport alloy
7" x 17" Leichtmetallfelgen
Design „Sport“
Cerchi in lega X-Sport 7" x 17"
Jantes en alliage 7" x 17" X-Sport
De aleación X-Sport, 7" x 17"
Lichtmetaal 7" x 17" Sport
7" X 17" X-Sport アロイホイール

Las especificaciones pueden variar de un país a otro. Para más información consulte con su concesionario.

Uitvoeringen en gegevens kunnen per land verschillen. Vraag daarom uw dealer naar de actuele specificaties.

仕様は国により異なる場合がございます。詳しくはお近くのジャガー・ジャパン正規販売店までお問い合わせください。

Interior trim - Innenfarben - Allestimento interni - Habillage intérieur - Tapicería interior - Interieurbekleding - インテリアカラー

Class
S
T
T
T
T
T
T
T



Sand



Dove



Charcoal



Heritage Tan



Birds eye maple veneer
Vogelaugenahorn
Inserti in radica di acero scuro
Boiseries en érable
Arce
Esdoornhoutfineer
バーズアイ メープルウッド

Class
L
L
L
L
L
L
L



Sand



Dove



Charcoal



Ivory



Heritage Tan

Special Edition
S
S
S
S
S
S
S



Sand



Charcoal



Heritage Tan



Cranberry



Grey stained birds eye maple veneer
Vogelaugenahorn in Smoke Grey
Inserti in legno d'acero grigio
Boiseries en érable teinté gris
Arce gris moteado
Grijs gelakt esdoornhoutfineer
グレイステインド バーズアイ メープルウッド

Special Edition
L
L
L
L
L
L
L



Sand



Dove



Charcoal



Ivory



Heritage Tan



Cranberry



Specifications may vary from country to country. Please contact your dealer for further details.

Ausführung und Ausstattung können sich von Land zu Land unterscheiden. Lassen Sie sich deshalb von einem Jaguar Vertragspartner genau informieren.

Le caratteristiche generali possono variare a seconda della nazione. Per conoscere i dati caratteristici della vettura disponibili nella propria nazione, rivolgersi al concessionario di zona.

Les spécifications peuvent varier selon les pays. Veuillez consulter votre concessionnaire pour plus de détails.





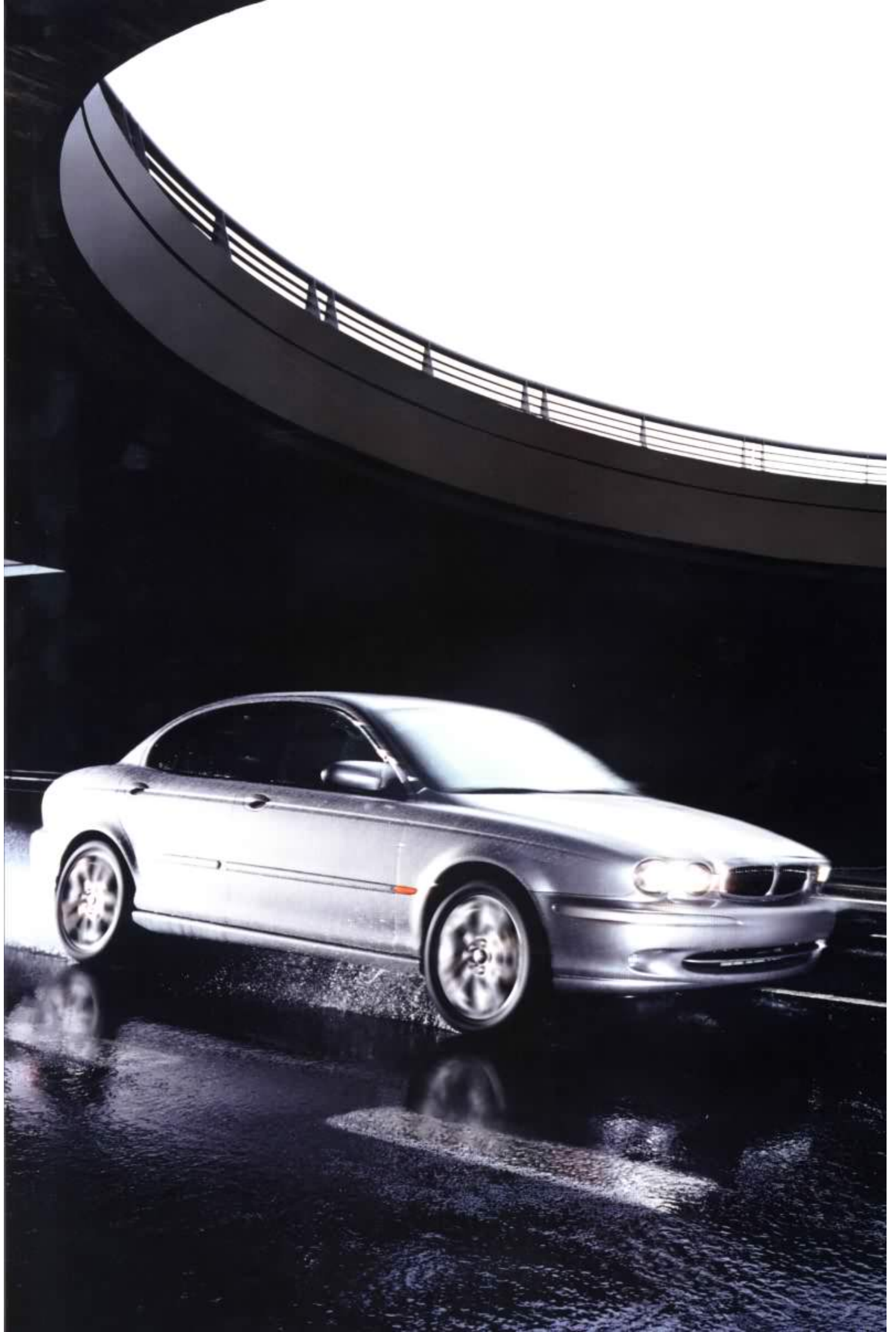
X

X-TYPE



JAGUAR

THE ART *of* PERFORMANCE





JAGUAR TRACTION⁴

Challenging situations can bring out the best, or the worst, in anyone. With Jaguar Traction⁴ permanent all-wheel drive, the X-TYPE keeps its grip. Continuously watching out for your safety in all weathers. And giving you all the fun you want when it's dry. To give a sporty, mainly rear wheel drive feel, power is split 40% to the front, and 60% to the rear wheels. If the rear wheels show any tendency to spin - for example under acceleration on a wet surface - more power is directed briefly to the front wheels. It's all done so quickly and smoothly, you'll never notice it happening.

JAGUARNET

If you need help or information, you'll get a rapid response from the optional JaguarNet system. You can access JaguarNet manually for all kinds of useful advice - like, where's the nearest good restaurant? In an emergency, help is summoned automatically from a response centre, via your Jaguar cellular phone. Linking with satellite navigation to track your location, they'll immediately call the emergency services to your aid.





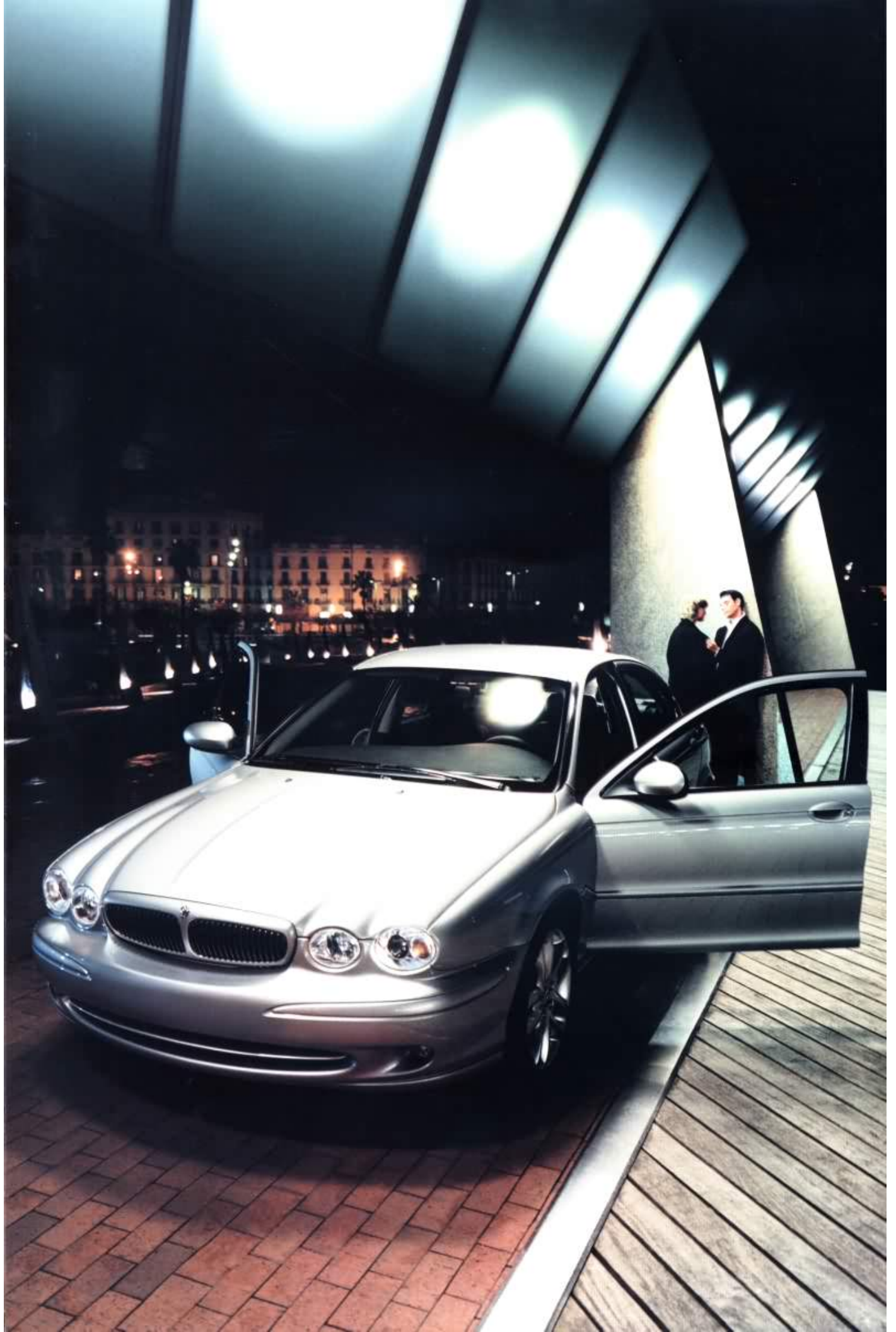


After a stressful day, it's so easy to get everything sorted as you want it. Voice activation lets you set the climate control temperature, select your favourite music or make a phone call with a simple spoken command. Just ask, without even having to pause between words - for example, "CD play track 6".

The X-TYPE's optional navigation system makes getting there and back as easy as a walk in the park. And it does far more. Ever thought how convenient it would be if controls for different functions were all in one place - at your fingertips? The navigation system comes with a touch screen display. To change routes, adjust the interior temperature, switch on the CD or make a phone call - just touch and go. You can set up all your personal preferences by selecting 'user options'. It's as simple, and as clever, as that.



Surround yourself with your own personal rock concert or jazz club and play the journey away. The X-TYPE's audio systems have been acoustically "tuned" to the vehicle interior to give you high performance sound. For convenience, automatic volume control raises the sound output as your speed increases. The optional 180 watt Premium sound system features a CD autochanger and ten speakers, including an active sub-woofer, for concert-hall quality. All systems can be easily operated from the multi-function steering wheel, touch screen display or by voice activation (where each is fitted).









BY APPOINTMENT TO
HER MAJESTY QUEEN ELIZABETH II
MANUFACTURERS OF JAGUAR AND JAGUAR CARS
JAGUAR CARS LIMITED COVENTRY



BY APPOINTMENT TO
HER MAJESTY QUEEN ELIZABETH II
THE QUEEN MOTHER
MANUFACTURERS OF JAGUAR AND JAGUAR CARS
JAGUAR CARS LIMITED COVENTRY



BY APPOINTMENT TO
HIS ROYAL HIGHNESS THE PRINCE OF WALES
MANUFACTURERS OF JAGUAR AND JAGUAR CARS
JAGUAR CARS LIMITED COVENTRY

www.X-TYPE.com



JAGUAR

THE ART of PERFORMANCE

Jaguar Cars Limited Browns Lane Allesley Coventry CV5 9DR England

Important Notice: Jaguar Cars Limited is constantly seeking ways to improve the specification, design and production of its vehicles and alterations take place continually. Whilst every effort is made to produce up to date literature, this brochure should not be regarded as an infallible guide to current specifications, nor does it constitute an offer for the sale of any particular vehicle. Distributors and dealers are not agents of Jaguar Cars Limited and have absolutely no authority to bind Jaguar Cars Limited by any express or implied undertaking or representation.

Wichtiger Hinweis: Jaguar ist ein eingetragenes Warenzeichen der Jaguar Cars Ltd. Jaguar Automobile werden ständig weiterentwickelt und verbessert. Die in diesem Katalog gemachten Ausstattungsangaben entsprechen dem Stand bei Drucklegung im Februar 2001. Änderungen von Konstruktion, Ausstattung und Lieferumfang sowie Druckfehler sind vorbehalten. Die angefertigten Modelle zeigen zum Teil Ausstattungen, die als Sonderausstattungen erhältlich sind. Für die persönliche Beratung steht Ihnen jeder Jaguar Vertragspartner gern bei detaillierten Informationen zur Verfügung.

Nota importante: Jaguar Cars Limited è costantemente alla ricerca di nuove tecnologie per migliorare le caratteristiche di progettazione e produzione delle proprie vetture che, di conseguenza, sono soggette a continui miglioramenti. Il presente catalogo, pertanto, non deve essere considerato una guida infallibile degli allestimenti proposti e nemmeno l'offerta di uno specifico modello. I Distributori e le Concessionarie non sono agenti di Jaguar Cars Limited e non hanno alcun potere di rappresentanza né possono prendere impegni espressi di alcun genere da cui derivino obblighi espressi o sottintesi per Jaguar Cars Limited.

Remarque importante: Jaguar Cars Limited applique une politique d'amélioration permanente des spécifications, de la conception et de la fabrication de ses véhicules. Ceci provoque, malgré tout le soin apporté à l'exactitude des informations qu'il figurent dans cette brochure, celle-ci ne doit pas être considérée comme un guide infallible des spécifications actuelles, ni tampoco constituer une offre de vente de n'importe quel véhicule particulier.

Los distribuidores y concesionarios no son agentes de Jaguar Cars Limited et no son en ningún caso hábiles a engajar la responsabilidad de Jaguar Cars Limited por sus, engagement ou representación expresse ou implicite.

Nota importante: Jaguar Cars Limited persigue constantemente mejoras de mayor las especificaciones, el diseño y la producción de sus vehículos, y las modificaciones se producen de forma continua. Aunque se esfuerza al máximo para facilitar la literatura más actualizada, no se debe considerar este folleto como una guía infallible de las especificaciones actuales, ni tampoco constituir una oferta de venta de ningún vehículo en concreto.

Los distribuidores y concesionarios no son agentes de Jaguar Cars Limited, ni tienen ninguna potestad para obligar a Jaguar Cars Limited mediante compromiso ni representación alguna, expresa o implícita.

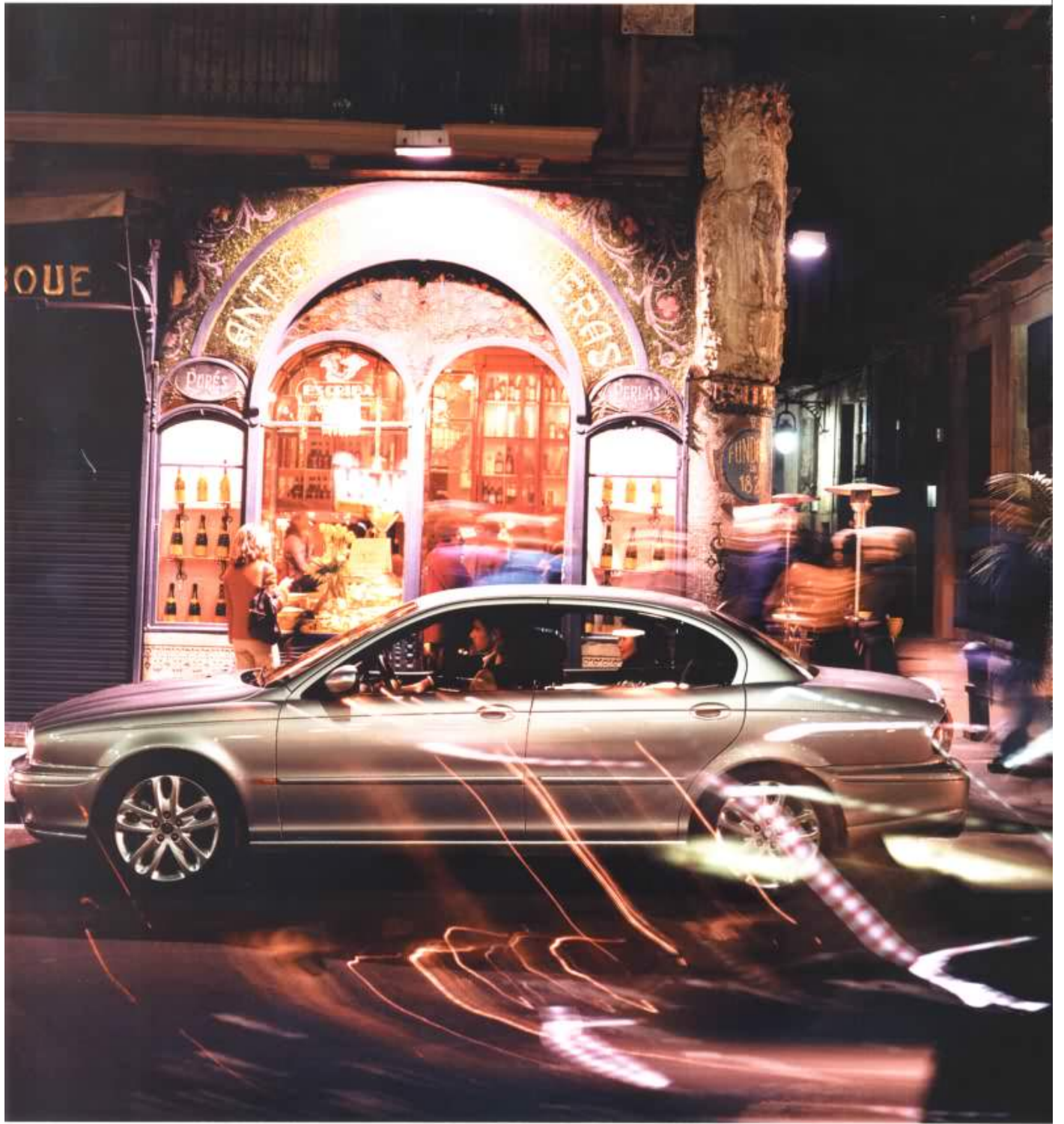
Belangrijk: De naam Jaguar is eigendom van Jaguar Cars Ltd. Aangezien wij voortdurend naar mogelijkheden zoeken om de eigenschappen van onze producten op een nog hoger niveau te brengen, worden wij ons het recht voorbehouden ons zonder nadere kennisgeving wijzigingen door te voeren. De afbeeldingen en gegevens in deze brochure voldoen aan internationale normen en kunnen in detail afwijken van voor ons land geldende afmetingen. Ook kunnen auto's zijn afgebeeld met opties. Informeer daarom altijd bij uw dealer naar de voor ons land juiste specificaties. Wij kunnen geen aansprakelijkheid aanvaarden voor eventuele onjuistheden in deze brochure, van welke aard ook. Gehele of gedeeltelijke nadruk van deze brochure, of het weergeven ervan in enige vorm, is zonder onze schriftelijke toestemming verboden.

ご注意
英国ジャガーカーズでは、常により良い車を目指し、仕様、デザイン、生産技術等あらゆる面で、さまざまな改良を積み重ねています。つきましては、このパンフレットに記載されている仕様ならびに装備において予告なく変更される場合があります。また、使用された写真等は、日本で販売される車と細部で異なる場合もあります。あらかじめご了承ください。

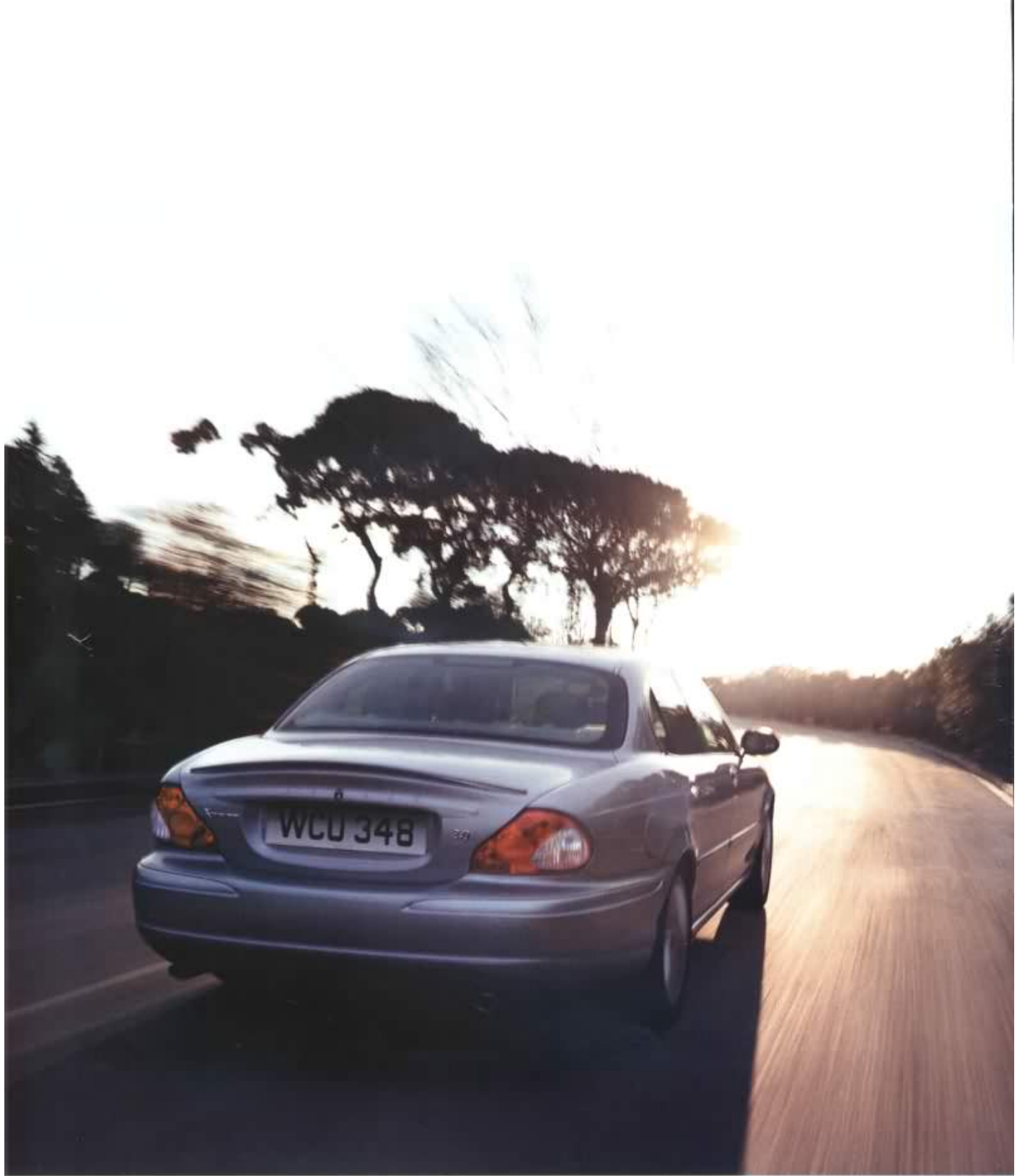
Design & Production: Warwick's UK Limited, Coventry, England. Printed by Wood Mitchell & Co Limited, Bicester, Oxford, England.

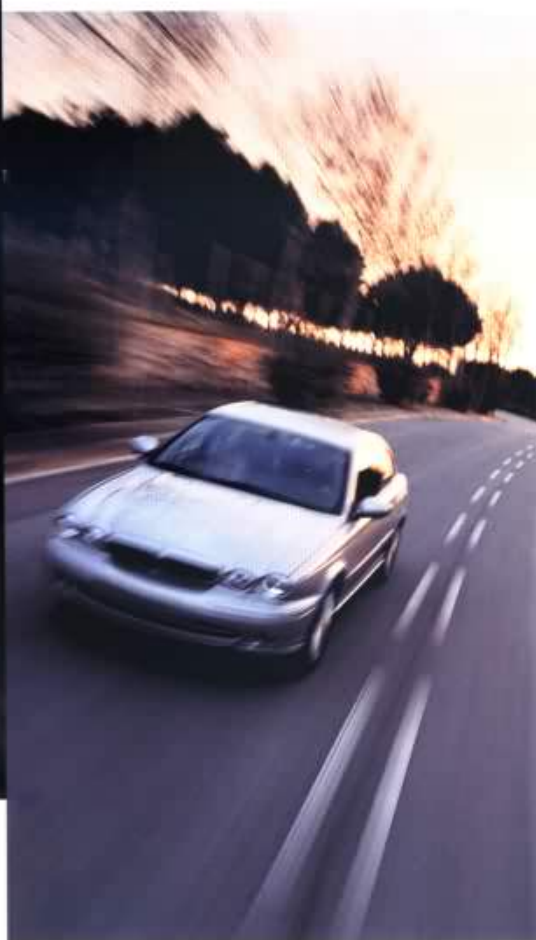
This brochure is produced using virgin wood fibre from sawmill residues, forest thinnings and sustainable forests. Pulpa used are Elemental Chlorine Free.

13440092/1/01









X-TYPE TECHNICAL SPECIFICATION



ENGINES

AJ-V6 2.5 and 3.0 litre 60 degree, 24-valve V6 with stiff but lightweight aluminium structure and transverse installation. Variable geometry intake manifold and continuously variable cam timing for optimum engine performance. Electronic engine management system, full authority electronic throttle and returnless fuel system for emissions control, refinement and driveability.

TRANSMISSIONS

5-speed manual transmission with self-adjusting clutch, and two-mass flywheel for refinement. Optional 5-speed electronic automatic transmission with overdrive 5th and lock up torque converter for fuel efficiency and cruising quietness. Different shift patterns optimise performance under various driving conditions e.g. gradient, cruise control. Both transmissions are maintenance free.

ALL WHEEL DRIVE

Jaguar Traction[®] permanent all wheel drive for optimum roadholding and safety at all speeds and in all weather conditions. Torque split 40% to front wheels, 60% to rear wheels, giving sporty, rear wheel drive feel. Viscous coupling senses differences in wheel speeds front and rear and adjusts torque split momentarily to optimise traction, handling and stability.

STEERING

Variable ratio, speed sensitive steering increases steering feedback and reduces power assistance proportionally with speed, giving excellent straight ahead feel, precision and stability. 2.6 turns lock to lock. Steering column adjustable for tilt and reach.

FRONT SUSPENSION

McPherson strut design with twin tube Bilstein dampers. Strut is mounted through a cast iron knuckle and 'zero offset' lower control arm to a steel perimeter frame, which also carries the steering rack and front anti-roll bar. To optimise dynamic performance and refinement, the lower control arm incorporates a hydrabush and the steel perimeter frame has 4 large rubber bushes.

REAR SUSPENSION

Torsion Control Link design allows each rear wheel to react independently, optimising ride refinement and handling. For added refinement, mounting systems isolate rear suspension subframe from body, and final drive unit from subframe. Anti-roll bar. Sport suspension: 10% stiffer springs and dampers, revised steering tune and 17" wheels and tyres provide taut, responsive handling.



BRAKING SYSTEM

Large diameter all wheel disc brakes, ventilated at the front. Four channel anti-lock braking system with electronic brake distribution for enhanced stability in adverse conditions. Optional Dynamic Stability Control links with anti-lock brakes and steering system to help prevent oversteer or understeer, applying brake force to any required combination of the four wheels.

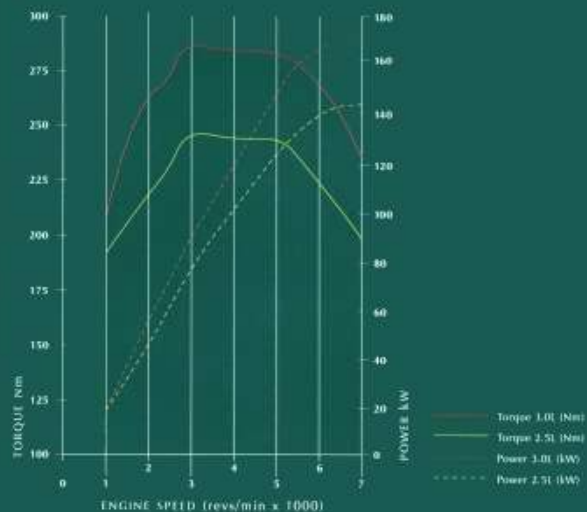
BODY CONSTRUCTION

4-door saloon. All steel monocoque construction with one-piece bodyside for maximum dimensional integrity. High strength steel used in front longitudinal members, seat belt anchorages, suspension mounting points, bumper mountings and door intrusion beams.

PAINT AND PROTECTION

81% (by weight) double sided, zinc coated steel. Four coat paint process; initial primer coat followed by wet-sanding to optimise surface smoothness for second primer and top coats. Primer coat application uses waterborne paint technology, reducing solvent emissions by 85% over traditional paint applications.

POWER AND TORQUE



EXTERIOR FEATURES

Chrome finish grille and badging. Standard on 2.5 V6 and V6 SE models.



Chrome finish boot plinth with integrated push button. Standard on 2.5 V6 and V6 SE models.

Chrome finish bumper blades front and rear. Standard on 2.5 V6 and V6 SE models.



Chrome finish tread plates. Standard on all models.



Chrome twin tailpipe finishers. Standard on all models.



Colour keyed door handles. Standard on all models.



High level stop light. Standard on all models.



Colour keyed door mirrors. Power adjustment and heated. Standard on all models.

Xenon headlights. Produce twice the light intensity of a standard halogen bulb. Optional on all models.



Foglights integrated into front bumper. Standard on all models.

Power mirrors fold back at the touch of a button. Optional on all models.



INTERIOR FEATURES

Birds eye maple veneer fascia.
Standard on 2.5 V6
and V6 SE models.



Instrument panel with
Jaguar racing green dials.
Standard on all models.



Power steering, with
manual tilt and reach
steering wheel adjustment.
Standard on all models.



Five speed manual
transmission.
Standard on all models.



Five speed automatic
transmission with
unique Jaguar J Gate.
Optional on all models.



Air conditioning
with pollen filter.
Standard on 2.5 V6
and V6 Sport models.



Automatic climate control
with pollen and odour filter.
Standard on V6 SE models.



Chrome finish
interior door handle.
Standard on all models.



Front electric windows
with one touch open
and close and anti-trap.
Standard on all models.



Glove box.
Illuminated and lockable.
Standard on all models.



Light panel includes courtesy
and two map lights. Courtesy
lights feature theatre dimming.
Standard on all models.



Fully trimmed boot, with
low loading height.
Standard on all models.



All lighting functions are
conveniently located in one area.
Standard on all models.

Boot illumination.
Standard on all models.



Footwell mats.
Optional on all models.



On-board trip computer
and message centre. Displays
travel and safety information.
Standard on V6 SE models.



Manual rear sunblind.
Optional on all models.



Birds eye maple door trims.
Standard on V6 SE models.



SEATING

Leather seat.
Standard on
V6 SE models.



Eight way electrically
adjustable front seats.
Standard on
V6 SE models.



Drivers seat
electric height rise.
Standard on all models.



Ten way electrically
adjustable front seats
including lumbar support.
Optional on all models.



Front stowage compartment.
Standard on 2.5 V6
and V6 Sport models.



Sliding front arm
rest with stowage.
Standard on
V6 SE models.



Stowage pockets on the
back of front seats.
Standard on all models.

Three adjustable
rear head restraints.
Standard on all models.



Fold down rear seat (split
70/30) with rear centre
armrest and two cupholders.
Optional on all models.



Rear centre armrest
and two cupholders.
Standard on
V6 Sport models.



Ski hatch and rear armrest.
Clean and safe transport
of skiing equipment.
Optional on all models.

LUXURY AND CONVENIENCE

Voice activation of audio, telephone, automatic climate control and some navigation features.
Optional on all models.



Touch screen incorporating controls for audio, automatic climate control and telephone (if fitted). Only available with navigation system.
Optional on all models.



On-board navigation guides you accurately to your destination.
Optional on all models.



TV tuner.
 Only available with navigation system.
Optional on all models.



Jaguar fixed dual band telephone.
Optional on all models.



▲ JaguarNet.
 Personal assistance from the Jaguar Response Centre is only a call away.
Optional on all models.

Steering wheel mounted telephone and cruise controls.
Standard on V6 SE models.



▲ Electric tilt and slide glass sunroof with anti-trap.
Optional on all models.



Illuminated driver and passenger vanity mirrors.
Standard on all models.



▲ Remote controlled garage door opener.
Optional on all models.

Reverse park control.
 An audible beep indicates the distance between the rear bumper and any obstacles.
Optional on all models.





JAGUAR
X
E-TYPE

IN CAR ENTERTAINMENT

Stereo cassette sound system with EON RDS, PTY, TA and automatic volume control.
Standard on all models.



4 twin cone speaker system.
Standard on all models.



Chrome speaker surrounds.
Standard on V6 SE models.

Premium sound system with ten speakers, active sub-woofer and six disc autochanger.
Optional on all models.



Six disc autochanger (mounted in the boot).
Optional on all models.



Steering wheel mounted audio controls.
Standard on V6 SE models.



Voice activation.
Controls audio functions verbally.
Optional on all models.



SAFETY AND SECURITY

Side airbags for driver and front passenger.
Standard on all models.



Seatbelt pre-tensioners.
Standard on all models.

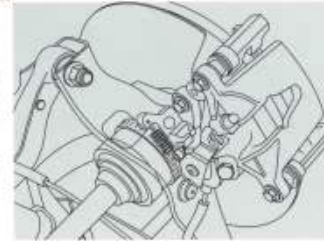


Side curtain airbags for front and rear occupants.
Standard on all models.

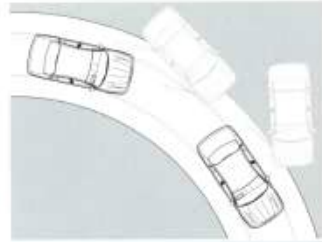


Dual-stage driver and front passenger frontal airbags.
Driver's seat track position and front passenger weight sensors.
Standard on all models.

Anti-lock Braking System (ABS). The system is four-channel and incorporates electronic brake-force distribution (EBD).
Standard on all models.



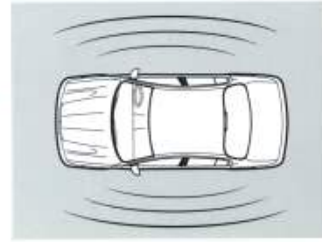
Dynamic Stability Control (DSC). Constantly monitors and controls each wheel in order to maintain well-balanced handling.
Optional on all models.



Remote central double/locking. Key can be used to remotely unlock drivers door only, all doors, boot lid or raise panic alarm.
Standard on all models.

Rain sensing wipers. Automatically turns on the wipers and adjusts their speed as required.
Optional on all models as part of Auto Clear View pack.

Car alarm including engine immobilisation.
Standard on all models.



Automatic headlights. Automatic light sensor turns on side lights and dipped beam when required.
Optional on all models as part of Auto Clear View pack.



Drive away locking. All doors lock automatically as the car starts to move.
Standard on all models.



Intrusion sensing. Ultrasonic sensors detect movement within the cabin.
Standard on all models.

PACKS AND WHEELS

COLD CLIMATE PACK OPTIONAL ON ALL MODELS

Heated front
windscreen.



Headlight
powerwash.



▲
Heated front seats.
Two stage variable.

AUTO CLEAR VIEW PACK OPTIONAL ON ALL MODELS

Rain sensing wipers.
Automatically turns
on the wipers and
adjusts wiper frequency.



Electrochromic rear
view mirror. Automatically
dims when required.

VOICE ACTIVATION AND CRUISE CONTROL PACK OPTIONAL ON ALL MODELS



◀
Voice activation,
cruise control,
trip computer with
message centre and
steering wheel audio
and telephone controls.



▲
Automatic headlights.
Automatic light sensor turns
on side lights and dipped
beam when required.

WHEELS

6.5" x 16" X-5
alloy wheel.
Standard on 3.0
litre models.



▲
6.5" x 16" X-10
alloy wheel.
Standard on 2.5
litre models.



▲
7" x 17" X-Sport
alloy wheel.
Standard on V6
Sport models.

SPORT MODELS

Colour keyed grille surround with grey grille vanes



Colour keyed bumper blades.



Colour keyed boot plinth and rear spoiler.



De-chromed window surrounds.



7" x 17" X-Sport alloy wheels.



Cloth/leather Sport seats.



Grey stained birds eye maple veneer fascia. (Standard maple veneer is a no cost option).



Grey stained birds eye maple gearknob (automatic transmission).



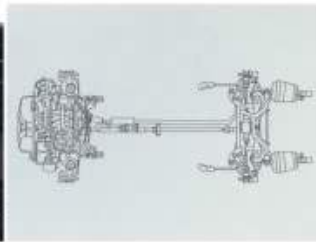
Perforated leather Sport gearknob (manual transmission).



Perforated leather Sport steering wheel.



Sport suspension.



STANDARD AND OPTIONAL EQUIPMENT

		V6	V6 SE	SPORT
		2.5	2.5 / 3.0	2.5 / 3.0
TRANSMISSION/SUSPENSION				
Cruise control	- with steering wheel audio and telephone controls	○	■	○
Drivetrain	- Jaguar Traction [®] (Full-time All-Wheel Drive)	■	■	■
Suspension:	- touring	■	■	□
	- sport	□	□	■
Transmission:	- 5 speed manual with moulded gearknob	■	□	□
	- 5 speed manual with leather gearknob	□	■	■
	- 5 speed electronic automatic with wooden gearknob to match veneer	○	○	○
EXTERIOR				
Chrome finish grille surround, boot plinth, bumper blades and window surrounds		■	■	□
Colour keyed grille surround, boot plinth, bumper blades and de-chromed window surrounds		□	□	■
Door handles body coloured		■	■	■
Exterior mirrors:	- power adjustable, heated	■	■	■
	- power fold back	○	○	○
Garage door opener		○	○	○
Headlights:	- manual headlight levelling	■	■	■
	- headlight powerwash	○	○	○
	- xenon headlights with automatic headlight levelling and headlight powerwash	○	○	○
Heated front windscreen		○	○	○
Heated rear window with timer		■	■	■
Metallic paint		○	○	○
Outside temperature display		■	■	■
Rear spoiler		□	□	■
Screenwasher nozzles	- heated	■	■	■
Sunroof	- glass, electric with tilt, slide and anti-trap	○	○	○
Wheels:	- cast alloy 6.5" x 16" X-10	■	■ / ○	□
	- cast alloy 6.5" x 16" X-5	○	○ / ■	□
	- cast alloy 7" x 17" X-Sport	○	○	■
	- spare full size steel 6.5" x 16"	○	○	□
	- spare full size alloy Sport 7" x 17"	(○)	(○)	○
	- spare space saver	■	■	■
INTERIOR				
Air conditioning:	- manual with pollen filter	■	□	■
	- automatic climate control with pollen and odour filter	○	■	○
Armrest	- doors, front and rear	■	■	■
Boot fully trimmed		■	■	■
Centre armrest:	- front, with stowage	■	□	■
	- front, sliding with stowage	○	■	○
	- rear with 2 cupholders	○	○	■
Digital clock		■	■	■
Duotone horn		■	■	■
Electric windows with one touch open and close and anti-trap:				
	- front	■	■	■
	- rear	○	■	○
Electrochromic rear view mirror		○	○	○
First aid kit		○	○	○
Footwell mats	- carpet, front and rear	○	○	○
Front puddle lights		□	■	□
Glove compartment	- illuminated, lockable, with stowage net	■	■	■
Headrests		■	■	■
Lights-on warning		■	■	■
Seats, front:	- manually adjustable with drivers seat electric height rise (2 way)	■	□	■
	- 8 way electrically adjustable	○	■	○
	- 10 way electrically adjustable including lumbar support	○	○	○
	- heated (2 stage variable)	○	○	○
Seats, rear:	- fold down rear seat (split 70/30) with rear centre armrest and 2 cupholders	○	○	○
	- rear head restraints x 3	■	■	■
Seats, trim:	- cloth	■	□	□
	- leather	○	■	□
	- cloth/leather Sport	□	□	■
	- leather Sport (perforated)	□	□	○
	- ivory leather (only available with leather seats or leather Sport seats)	(○)	○	(○)
Ski hatch	- bag and rear armrest	○	○	○

		V6	V6 SE	SPORT
		2.5	2.5 / 3.0	2.5 / 3.0
INTERIOR CONT...				
Speedometer/rev counter display	- with fuel gauge, coolant gauge and mileage and trip counter	■	■	■
Steering column	- manually adjustable for tilt and reach	■	■	■
Steering wheel:	- leather	■	■	□
	- Sport leather (perforated)	□	□	■
Storage space	- doors, front and rear	■	■	■
Stowage pockets	- back of front seats	■	■	■
Sunblind	- rear, manual (not available with premium sound system)	○	○	○
Sunvisors	- illuminated with vanity mirror, driver and front passenger	■	■	■
Wood veneer:	- birds eye maple	■	■	△
	- grey stained birds eye maple	□	□	■
	- birds eye maple door trims	□	■	□
COMMUNICATIONS				
Audio equipment:	- custom stereo cassette sound system with 4 twin cone speakers, EON RDS, PTY, TA and automatic volume control, CD compatible	■	■	■
	- CD autochanger (6 disc capacity)	○	○	○
	- premium sound system with 10 speakers, DSP, active sub-woofer and CD autochanger	○	○	○
	- chrome speaker surrounds	□	■	□
JaguarNet	- only available with fixed dual band telephone	(○)	(○)	(○)
Navigation system (1)	- touch screen incorporating controls for audio, automatic climate control and telephone (if fitted) (only available with automatic climate control)	(○)	○	(○)
Steering wheel audio and telephone controls		○	■	○
Telephone	- fixed dual band (only available with front, sliding centre armrest)	(○)	○	(○)
Trip computer with message centre		○	■	○
TV tuner (only available with navigation system)		(○)	(○)	(○)
Voice activation	- audio, telephone and automatic climate control (only available with steering wheel audio and telephone controls and trip computer with message centre)	(○)	○	(○)
SAFETY				
Airbags:	- front and side, driver and front passenger	■	■	■
	- curtain, front and rear	■	■	■
	- occupancy sensing	■	■	■
Anti-lock braking system		■	■	■
Brakes:	- disc brakes, front, inner vented	■	■	■
	- disc brakes, rear	■	■	■
Dynamic Stability Control		○	○	○
Front fog lights		■	■	■
High level stop light		■	■	■
Impact protection	- provided by wrap around bumpers and side strips	■	■	■
Power assisted steering	- speed sensitive, variable ratio	■	■	■
Reverse park control		○	○	○
Safety bodyshell	- front and rear deformation zones, door reinforcement, bumpers that regenerate to original shape following impacts up to 2.5mph	■	■	■
Seatbelts:	- front inertia-reel seatbelts with pyrotechnic belt latch tensioner and belt force limiter	■	■	■
	- front manual seatbelt height adjustment	■	■	■
	- rear three-point seatbelts for all passengers, including third headrest	■	■	■
Warning triangle		○	○	○
SECURITY				
	- central/double locking and perimeter security system with 2-stage unlock and remote control	■	■	■
	- inclination sensing	○	○	○
	- intrusion sensing	■	■	■
OPTIONAL PACKS				
Auto Clear View pack	- rain sensing wipers, electrochromic rear view mirror and automatic headlights	○	○	○
Cold Climate pack	- headlight powerwash, heated front windscreen and heated front seats	○	○	○
Voice Activation and Cruise Control pack	- voice activation, cruise control, trip computer with message centre and steering wheel audio and telephone controls	○	○	○

(1) Country mapping DVDs are available for:

Europe (Austria, Belgium, Denmark, France, Germany, Italy, Luxembourg, Netherlands, Portugal*, Spain*, Sweden, Switzerland, and the United Kingdom (except Northern Ireland).
Australia
Japan

North America (Canada*).* limited coverage

- Standard
- Optional at extra cost
- △ Optional at no extra cost
- Not available
- (○) Linked option

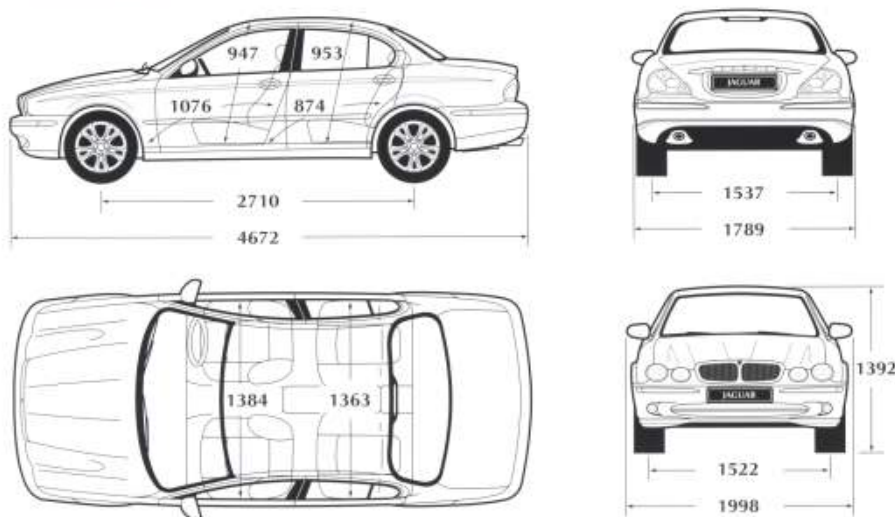
Specifications may vary from country to country.

SPECIFICATIONS V6, SE AND SPORT

	V6 2.5		V6 3.0	
ENGINE				
Cylinders/valves per cylinder	6/4		6/4	
Bore/stroke - mm	81.6/79.5		89.0/79.5	
Capacity - cc	2495		2967	
Maximum power - DIN bhp (kW)	194 (145)		231 (172)	
EEC PS (kW)	196 (144)		231 (169)	
@ rev/min	@ 6800		@ 6800	
Maximum torque - DIN lb.ft. (Nm)	180 (244)		210 (284)	
EEC lb.ft. (Nm)	178 (241)		206 (279)	
@ rev/min	@ 3000		@ 3000	
Compression ratio :1	10.3		10.5	
Transmission	5 speed manual	5 speed automatic	5 speed manual	5 speed automatic
PERFORMANCE (MANUFACTURER'S ESTIMATES)				
Acceleration 0-60 mph (0-100 km/h) - sec	7.9 (8.3)	8.5 (8.9)	6.6 (7.0)	7.1 (7.5)
Top speed - mph (km/h)	140 (225)	137 (220)	146 (235)	143 (230)
FUEL CONSUMPTION (1)				
Urban - mpg (l/100km)	20.7 (13.6)	18.9 (15.0)	19.1 (14.8)	18.7 (15.1)
Extra urban - mpg (l/100km)	39.0 (7.2)	37.3 (7.6)	36.8 (7.7)	36.4 (7.8)
Combined - mpg (l/100km)	29.5 (9.6)	27.5 (10.3)	27.5 (10.3)	27.0 (10.5)
Carbon dioxide emissions g/km	234	244	244	249
Tank capacity - gals (ltr) approx. (incl. 5 ltr reserve)	13.5 (61.0)	13.5 (61.0)	13.5 (61.0)	13.5 (61.0)
WEIGHT (2)				
Kerb weight - lb (kg)	3428 (1555)	3516 (1595)	3428 (1555)	3516 (1595)
Gross vehicle weight - lb (kg)	4486 (2035)	4574 (2075)	4486 (2035)	4574 (2075)
Gross vehicle weight - towing - lb (kg)	4673 (2120)	4762 (2160)	4673 (2120)	4762 (2160)
Permitted roof load - lb (kg)	165 (75)		165 (75)	
Permitted trailer load, unbraked - lb (kg)	1654 (750)		1654 (750)	
Permitted trailer load, braked - lb (kg)	3308 (1500)		3308 (1500)	
Permitted towbar download - lb (kg)	132 (60)		132 (60)	
WHEELS/TYRES (3)				
Wheel type	X-10 Alloy 6.5" x 16"		X-5 Alloy 6.5" x 16"	
Tyre size	205/55 R16		205/55 R16	
Turning circle - ft. (m)	35 ft 7" (10.84)		35 ft 7" (10.84)	
Boot volume - cu.ft. (VDA l)	16 (452)		16 (452)	

- (1) The fuel economy figures were obtained in tests carried out in line with the Passenger Car Fuel Consumption Amendment Order 1996 (Reflecting EU Directive 1999/100 EEC fuel consumption test cycle). These figures were correct at the time of going to press.
- (2) Please consult your dealer for details of changes associated with option fitment. Kerb weights reflect vehicles to standard specifications. Optional extras increase weight.
- (3) X-Sport 7.0" x 17" alloy wheel and 225/45 ZR17 tyres available as an option on V6 and SE models and standard on Sport models.

DIMENSIONS



Dimensions shown in mm.

NOTE: The dimension details refer to a nominal car but may vary marginally from car to car due to design and production tolerances. The nominal condition has been used wherever possible. Please consult your dealer for details of changes associated with option fitment.



JAGUAR FINANCIAL SERVICES

Jaguar Financial Services offer a range of finance and insurance plans tailored to provide maximum choice and flexibility. You'll be as impressed with the finance as you are with the car. Your Jaguar dealer will match your personal or business requirements to the most appropriate finance plan, provide you with quotations and process your application.



WWW.X-TYPE.COM

Your personal Jaguar journey may begin with a visit to X-TYPE.COM. In this virtual world you can build an X-TYPE by choosing the exterior colour and wheels available and view some of the key features of the new car. The web site also includes such helpful tools as a dealer locator, downloadable brochure and specifications, and a price list. There is also an X-TYPE screensaver and Jaguar 2Sync™, a free downloadable personal organiser.



OWNERSHIP

X-TYPE comes with Total Care which incorporates 3 year or 60,000 mile Vehicle Warranty, together with a 3 year unlimited mileage Paint Surface Warranty and a 6 year unlimited mileage Corrosion (Perforation) Warranty. Also included in Total Care is the support of 24 hour RAC Incident Management, including onward travel and hotel accommodation in the UK. Jaguar European emergency assistance affords you similar cover should you be travelling in Continental Europe. Furthermore, optional extended warranties are available so allowing you to extend the 3 year/60,000 mile warranty cover for a further 12, 24 or 36 months (years 4, 5 and 6) to 100,000 miles total vehicle mileage.

COLOUR AND TRIM

The interior theme adopts an upper and lower environment contrast colour split. Please consult your dealer for further colour/trim information. To examine the actual quality of Jaguar upholstery materials please consult your Jaguar dealer's colour and upholstery guide.

For full details of available colour/trim combinations and extra costs for upholstery materials (where applicable), please consult your dealer and the current Price List.

CLOTH



SAND



DOVE



WARM CHARCOAL



HERITAGE TAN



BIRDS EYE
MAPLE VENEER

LEATHER



SAND



DOVE



WARM CHARCOAL



IVORY



HERITAGE TAN

SPORT CLOTH/LEATHER



SAND



WARM CHARCOAL



HERITAGE TAN



CRANBERRY



GREY STAINED BIRDS
EYE MAPLE VENEER

SPORT LEATHER



SAND



DOVE



WARM CHARCOAL



IVORY



HERITAGE TAN



CRANBERRY

2001 JAGUAR X-TYPE COLOUR GUIDE

The colours are intended to serve primarily as a guide and while they approximate to the actual shades they should not be utilised for paint matching or for any other purpose where complete accuracy is essential.

EXTERIOR COLOURS



WHITE ONYX



PLATINUM*



TITANIUM*



ANTHRACITE*



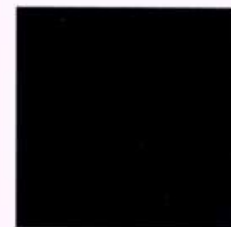
TOPAZ*



ADRIATIC*



PACIFIC*



WESTMINSTER



PHOENIX



CARNIVAL*



EMERALD*



BRITISH RACING GREEN

INTERIOR COLOURS



IVORY



SAND



DOVE



HERITAGE TAN



CRANBERRY



WARM CHARCOAL

*Metallic paint is an extra cost option.



BY APPOINTMENT TO
HER MAJESTY QUEEN ELIZABETH II
MANUFACTURERS OF JAGUAR AND JAGUAR CARS
JAGUAR CARS LIMITED COVENTRY



BY APPOINTMENT TO
HER MAJESTY QUEEN ELIZABETH II
THE QUEEN MOTHER
MANUFACTURERS OF JAGUAR AND JAGUAR CARS
JAGUAR CARS LIMITED COVENTRY



BY APPOINTMENT TO
HIS ROYAL HIGHNESS THE PRINCE OF WALES
MANUFACTURERS OF JAGUAR AND JAGUAR CARS
JAGUAR CARS LIMITED COVENTRY

www.X-TYPE.com



JAGUAR

THE ART of PERFORMANCE

Jaguar Cars Limited Browns Lane Allesley Coventry CV5 9DR England

Important Notice: Jaguar Cars Limited is constantly seeking ways to improve the specification, design and production of its vehicles and alterations take place continually. Whilst every effort is made to produce up to date literature, this brochure should not be regarded as an infallible guide to current specifications, nor does it constitute an offer for the sale of any particular vehicle. Distributors and dealers are not agents of Jaguar Cars Limited and have absolutely no authority to bind Jaguar Cars Limited by any express or implied undertaking or representation.

Wichtiger Hinweis: Jaguar ist ein eingetragenes Warenzeichen der Jaguar Cars Ltd. Jaguar Automobile werden ständig weiterentwickelt und verbessert. Die in diesem Katalog gemachten Ausstattungsangaben entsprechen dem Stand bei Drucklegung im Februar 2001. Änderungen von Konstruktion, Ausstattung und Lieferumfang sowie Druckfehler sind vorbehalten. Die angefertigten Modelle zeigen zum Teil Ausstattungen, die als Sonderausstattungen erhältlich sind. Für die persönliche Beratung steht Ihnen jeder Jaguar Vertragspartner gern mit detaillierten Informationen zur Verfügung.

Nota importante: Jaguar Cars Limited è costantemente alla ricerca di nuove tecnologie per migliorare le caratteristiche di progettazione e produzione delle proprie vetture che, di conseguenza, sono soggette a continui miglioramenti. Il presente catalogo, pertanto, non deve essere considerato una guida infallibile degli allestimenti proposti e nemmeno l'offerta di uno specifico modello. I Distributori e le Concessionarie non sono agenti di Jaguar Cars Limited e non hanno alcun potere di rappresentanza né possono prendere impegni espressi di alcun genere da cui derivino obblighi espressi o sottintesi per Jaguar Cars Limited.

Remarque importante: Jaguar Cars Limited applique une politique d'amélioration permanente des spécifications, de la conception et de la fabrication de ses véhicules. Ceci nous amène, malgré tout le soin apporté à l'exactitude des informations qu'il figurent dans cette brochure, celle-ci ne doit pas être considérée comme un guide infallible des spécifications actuelles, ni tampoco constituer une offre de vente de n'importe quel véhicule particulier.

Los distribuidores y concesionarios no son agentes de Jaguar Cars Limited et ne sont en aucun cas habilités à engager la responsabilité de Jaguar Cars Limited par tout engagement ou représentation expresse ou implicite.

Nota importante: Jaguar Cars Limited persigue constantemente mejoras de mayor las especificaciones, el diseño y la producción de sus vehículos, y las modificaciones se producen de forma continua. Aunque se esfuerza al máximo para facilitar la literatura más actualizada, no se debe considerar este folleto como una guía infallible de las especificaciones actuales, ni tampoco constituir una oferta de venta de ningún vehículo en concreto.

Los distribuidores y concesionarios no son agentes de Jaguar Cars Limited, ni tienen ninguna potestad para obligar a Jaguar Cars Limited mediante compromiso ni representación alguna, expresa o implícita.

Belangrijk: De naam Jaguar is eigendom van Jaguar Cars Ltd. Aangezien wij voortdurend naar mogelijkheden zoeken om de eigenschappen van onze producten op een nog hoger niveau te brengen, worden wij ons het recht voorbehouden om zonder nadere kennisgeving wijzigingen door te voeren. De afbeeldingen en gegevens in deze brochure voldoen aan internationale normen en kunnen in detail afwijken van voor ons land geldende afmetingen. Ook kunnen auto's zijn afgebeeld met opties. Informeer daarom altijd bij uw dealer naar de voor ons land juiste specificaties. Wij kunnen geen aansprakelijkheid aanvaarden voor eventuele onjuistheden in deze brochure, van welke aard ook. Gehele of gedeeltelijke nadruk van deze brochure, of het weergeven ervan in enige vorm, is zonder onze schriftelijke toestemming verboden.

ご注意
英国ジャガーカーズでは、常により良い車を目指し、仕様、デザイン、生産技術等あらゆる面で、さまざまな改良を積み重ねています。つきましては、このパンフレットに記載されている仕様ならびに装備において予告なく変更される場合があります。また、使用された写真等は、日本で販売される車と細部で異なる場合もあります。あらかじめご了承ください。

Design & Production: Warwick's UK Limited, Coventry, England. Printed by Wood Mitchell & Co Limited, Bicester, Oxford, England.

This brochure is produced using virgin wood fibre from sawmill residues, forest thinnings and sustainable forests. Pulpa used are Elemental Chlorine Free.

13440092/1/01

2001 JAGUAR X-TYPE COLOUR AND TRIM COMBINATIONS

EXTERIOR AND INTERIOR COLOUR COMBINATIONS

	WARM CHARCOAL	CRANBERRY	DOVE	HERITAGE TAN	IVORY	SAND
Adriatic	■		■		■	■
Anthracite	■	■	■	■	■	■
British Racing Green	■	■		■	■	■
Carnival	■	■	■		■	■
Emerald	■			■	■	■
Pacific	■		■		■	■
Phoenix	■		■		■	■
Platinum	■	■	■	■	■	■
Titanium	■	■	■	■	■	■
Topaz	■			■	■	■
Westminster			■	■	■	■
White Onyx	■	■	■		■	■

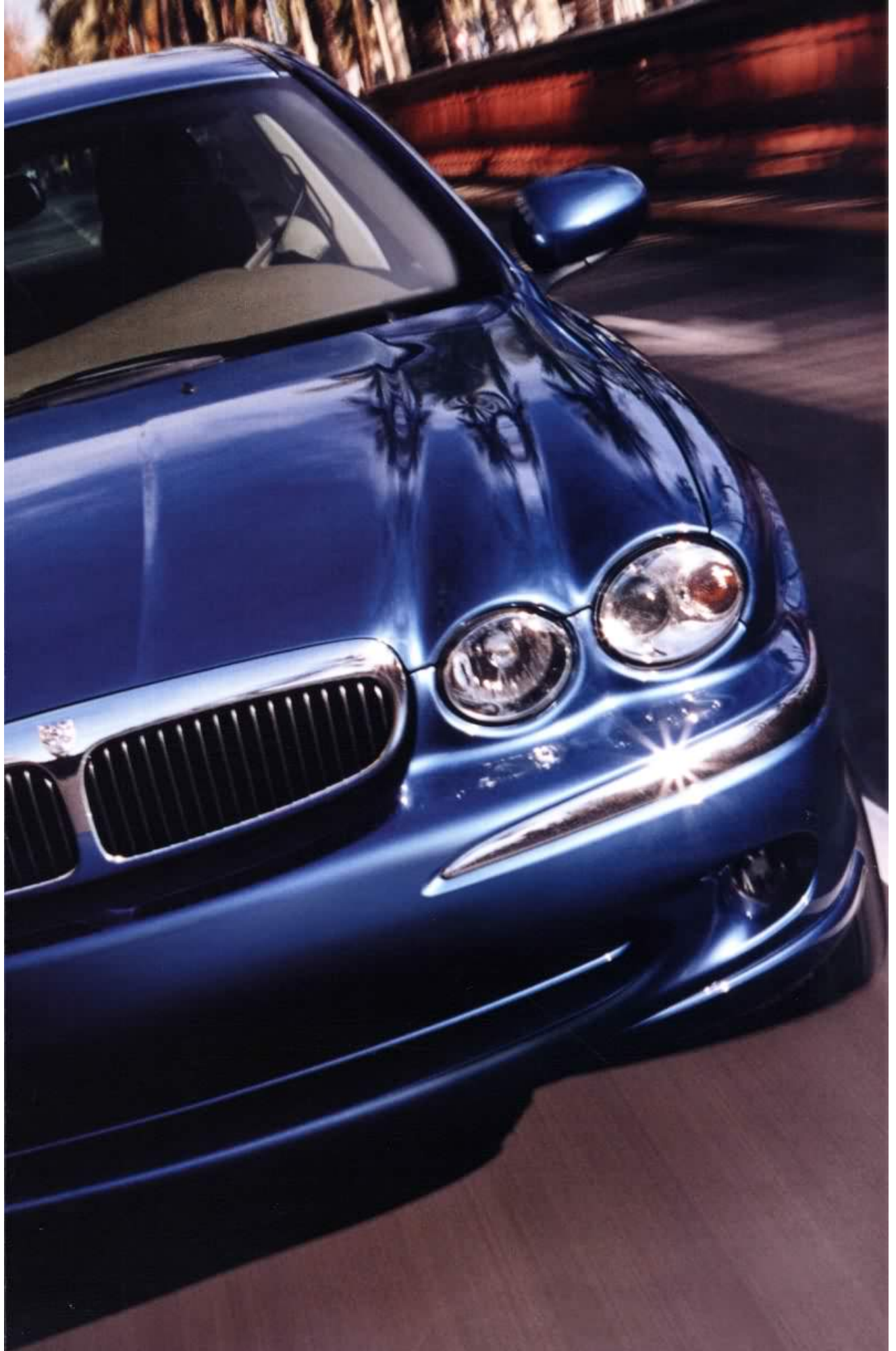
■ Recommended combinations

SEAT COLOUR AVAILABILITY

	WARM CHARCOAL	CRANBERRY	DOVE	HERITAGE TAN	IVORY	SAND
Cloth Standard Seat	■		■	■		■
Leather Standard Seat	■		■	■	■	■
Leather Sports Seat	■	■	■	■	■	■
Cloth/Leather Sports Seat	■	■		■		■

■ Combinations available







JAGUAR
X
E-TYPE



Jaguar X-TYPE. The new generation is here.

Jaguar X-TYPE. Ein neues Gesicht in Ihrem Leben - und ein starker Charakter.

Jaguar X-TYPE. Una nuova generazione di modelli è già diventata realtà.

Jaguar X-TYPE, la nouvelle génération.



Jaguar X-TYPE. La nueva generación ha llegado.

Jaguar X-TYPE. Jaguars opwindende entree in een uitdagend, snel groeiend marktsegment.

Jaguar X-TYPE。新世代ジャガーの鼓動。

www.x-type.com



JAGUAR
X
TYPE



Jaguar's new Traction[®] all-wheel drive.
Get a grip with it.

Serienmäßig mit Jaguar Traction[®] Allradantrieb.
Fahrodynamik in Bestform.

La nuova trazione integrale Jaguar Traction[®]
per una maggiore aderenza.

Transmission intégrale, une expérience de
conduite hors du commun!



La nueva Tracción[®] de Jaguar a las
cuatro ruedas. Domínese con él.

Traction[®] permanente vierwielaandrijving
garandeert opwindend rijplezier en
optimale veiligheid.

トラクション4。ジャガー最新の全輪駆動
システム。さあ、新しい走りへ。

www.X-TYPE.com